

December 23, 2025

**Renovation of Offices with Addition, Gymnasium Project,
Palatka Campus (SJR-BID-09-2025) St. Johns River State College**

Architect's Job Number: 015ZA08

ADDENDUM 2

All items in the Addendum are incorporated into the Contract Documents.

Item 1.

Division 09 68 13 Modular Flooring shall be used in the offices (Attachment A).

Item 2.

Replace sheets as required with sheets that are attached to this addendum (included with the email).

MODULAR FLOORING**PART 1 - GENERAL****1.01 THIS SECTION INCLUDES**

- A. Textile composite flooring modules as shown on the drawings and schedules and as indicated by the requirements of this section.

1.02 RELATED DOCUMENTS

- A. Drawings and General Provisions of the Contract (including General and Supplementary Conditions and Division 1 sections) apply to the work in this section only.

1.03 RELATED SECTIONS

- A. Other Division 9 sections for floor finishes related to this section but not the work of this section.
- B. Division 3 Concrete – not included work in this section.
- C. Division 6 Wood and Plastics – not included work this section.
- D. Division 7 Thermal and Moisture in Protection – not included work this section.

1.04 QUALITY ASSURANCE AND REGULATORY REQUIREMENTS

- A. Qualifications of flooring installation contractor: All work shall be done by installation firms specializing in commercial flooring and carpet installation. It is required that the firm or individual shall be a member of the Floor Covering Installation Contractors Association (FCICA) and/or certified by the Certified Floorcovering Installers Association (CFI). Flooring contractor to be specialty contractor normally engaged in this type of work and shall have three (3) years minimum documented experience in commercial installation of similar flooring materials and participation in manufacturer's environmental program including responsible flooring removal, recycling, and installation.
- B. Flooring contractor will be responsible for the proper product installation, including floor preparation in all the areas indicated in the drawings to receive Kinetex modules. The installation standard will be as listed in manufacturing installation instructions.
- C. Flooring contractor to provide owner a written warranty that guarantees the completed installation to be free from defects in materials and workmanship for a period of no less than two (2) years after job completion.
- D. Manufacturer qualifications: Manufacturing facility to ISO 14001 certified and have a minimum of 20 years experience in the manufacture of commercial flooring.
- E. Manufacturer to offer a reclamation program for the recycling of existing broadloom carpet, modular carpet tile and textile composite flooring.
- F. All warranties must be issued by the manufacturer as standard published warranties on all types of flooring modules within this document. Second source warranties that involve parties other than the textile composite flooring manufacturer are unacceptable. If the product fails to perform as warranted when installed according to the manufacturer's installation instruction and maintained according to manufacturer maintenance instructions, the affected area will be repaired or replaced at the expense of the manufacturer. Manufacturer will provide standard published written performance warranties for the following:

- a. Lifetime product performance. Will not delaminate along seams or lose more than five (5%) percent by weight of fiber during its useful life.
 - b. Lifetime static propensity, meaning built-in protection below 3.0 kv.
 - c. Lifetime Stain Removal
 - d. Lifetime Colorfastness (Light and Crocking)
- G. Manufacturer to provide field service experts to assist in project start-up as required by the job and will notify owner, architect, general contractor, or another designated contact if any installation instructions are not followed.
- H. Provide flooring material to meet the following test performance criteria as tested by a recognized independent testing laboratory. Certified test reports shall be submitted by the manufacturer for each test method. Requirements listed below must be met by all products being submitted for approval:
- a. Pill Test/ DOC-FF-1-70 (ASTM D-2859) - Requirement: Pass
 - b. Flooring Radiant Panel / ASTM E-648 - Requirement: Class I (Above .45 w/cm)
 - c. CRI VOC Chamber Test/Indoor Air Quality test (CRI-IAQ) Green Label Plus™ Test.
 - d. Lightfastness: Rating of not less than 5 on International Grey Scale after 40 SFU's when tested in accordance with AATCC Test Method 16.3.
 - e. Crockfastness: Minimum stain rating on International Grey Scale of not less than 5 wet or dry when tested in accordance with AATCC Test Method 165.
 - f. Atmospheric Fading: Burned Gas shall not be less than 5 on International Grey Scale after two cycles on each test as per AATCC Test Method 129 Ozone and AATCC Test Method 23.
 - g. Noise Reduction Coefficient (ASTM C 423-02): NRC Rating of 0.30
 - h. Impact Insulation Classification (ASTM E 492-09): IIC Rating of 64
 - i. Slip Resistance (ASTM 1028-96): Complies with ADA Guidelines for level surface
 - j. Thermal Insulation (ASTM C 518): R. 73

1.05 SUBMITTALS

- A. Submit to architect and/or owner ten (10) days prior to bid, two (2) 6.5" x 6.5" (minimum size) finished samples of the exact type of flooring proposed, including quality, pattern, color and backing.
- B. Submit to architect and/or owner ten (10) days before bid, any proposed substitutions for consideration. Submit at least three (3) references of installations using the same flooring technology, as described within this text. Include contact names and telephone numbers.
- C. Submit manufacturer's warranties, installation instructions, and maintenance instructions before bid date.
- D. Submit the manufacturer's certification that the flooring has been tested by an independent laboratory and complies with the required flammability tests as well as other testing requirements as listed under 1.04 F.

1.06 ENVIRONMENTAL/FIELD CONDITIONS

- A. Deliver all materials to the installation site in the manufacturer's original packaging and in good condition. Packaging to contain manufacturer's name and marks, identification number, shipping and handling instructions and related information.
- B. Delivered and stored materials must be available for inspection as required by the owner, architect, general contractor and/or the manufacturer.

- C. Sub-floor preparation is to include all required work to prepare the existing floor for installation of the product as specified in this document. Sub-floor preparation shall meet all conditions as specified in manufacturer's flooring installation instructions.
- D. Sub-floor preparation will include, as required, the removal and repair of the existing floor surface. It is required that the floor of a renovation project be inspected before the bid date.
- E. All materials, including adhesives, are to be delivered to the site of installation at a minimum of 48 hours prior to the start of installation and stored in a clean and dry room that measures above 65°F and below 95°F and measures between 10% and 65% relative humidity (RH). To maintain temperature and relative humidity, permanent heating and air conditioning systems (HVAC) must be in operation. Place pallets of textile composite flooring modules on a flat surface (do not double stack pallets). After work is completed, the ambient room temperature should remain at 65°F and relative humidity between 10% and 65% for 48 hours. These materials and related adhesives shall be protected from the direct flow of heat from heating fixtures and appliances such as hot-air registers, radiators, or other. Site conditions shall include those specified in the flooring manufacturer's installation instructions and shall also include sufficient heat, light and power required for effective and efficient working condition.
- F. Once the temperature and relative humidity in area for installation have been stabilized, loose lay the modules within the installation area and allow them to precondition for 48 hours prior to installation. Module installation shall not commence until painting and finishing work is complete and ceiling and overhead work is tested, approved and completed. Traffic shall be closed during the installation of the textile composite flooring products. Verify concrete slabs are dry per the standards for bond and moisture tests listed in the manufacturer's installation instructions.

1.07 SUBSTITUTIONS

- A. All Bid submittals must conform to the specifications in this document.
- B. All test results to be in accordance with a certified independent testing laboratory.

PART 2 – PRODUCTS

2.01 MANUFACTURERS

- A. Basis of Design: Kinetex, a brand of J+J Flooring, P.O. Box 1287, Dalton, GA, 30722. (800) 241-4586. JJFLOORINGGROUP.COM. Please contact RYANNE BEILE, (904) 477-8256, ryanne.beile@jjflooring.com

Any alternate manufacturer and/or product must meet or exceed those requirements specified under all sections of this document in pattern, color, and fiber. Any substitutions must be made in accordance with Section 1.00 of this document.

2.02 TEXTILE COMPOSITE FLOORING MATERIALS

- A. Kinetex flooring modules (tiles):
 - 1. Product: Network Modular 1842 or Owner selected from Kinetex line.
 - 2. Color: Router 2856 or Owner selected from color line.
 - 3. Backing: Kinetex Felt Cushion
 - 4. Dye Method: Solution Dyed
 - 5. Wear Layer: 100% Polyester
 - 6. Total Weight (Nominal Average): 4.5 oz - 5.2 oz / square foot
 - 7. Pattern Repeat: N/A
 - 8. Soil Release: Yes
 - 9. Standard Size: 24" x 24" (approx. (60.96cm x 60.96 cm)

10. Warranties: Lifetime Product Performance, Colorfastness to Light & Crocking, Stain Removal, Static Protection from Edge Ravel and Delamination Failure; Lifetime Dimensional Stability.
11. Testing Specifications - Pill Test: Yes
12. Testing Specifications - Flooring Radiant Panel: Class 1
13. Testing Specifications - Smoke Density: Less than 450.0 flaming (ASTM E 662)
14. Testing Specifications - Static Test: Less than 3.0kv (AATCC-134)
15. Recycled content: Minimum of 47% recycled content
16. NSF/ANSI 140 Platinum Certified
17. Closed-loop recyclable

2.03 ADHESIVES

- A. Kinetex® Adhesive, an aggressive, pressure-sensitive adhesive designed for the installation of Kinetex textile composite flooring modules is required.

2.04 ACCESSORIES

- A. Kinetex requires protective transition 3/16-inch to other floor covering thickness. Provide transition/reducing strips tapered to meet abutting materials as indicated in the drawings.
- B. Provide aluminum edge with lip to protect Kinetex edge.

PART 3 EXECUTION

3.01 INSPECTION

- A. Examine and verify that sub-floor surfaces are smooth and flat within tolerances specified for that type of work and are ready to receive installation of modules.
- B. Verify that wall surfaces are smooth and flat within the tolerances specified for that type of work, are dust-free, and are ready to receive installation of modules.
- C. Verify that sub-floor surfaces are dust-free and free of substances that could impair bonding of adhesive materials to sub-floor surfaces.
- D. Verify that concrete sub-floor surfaces are dry enough and ready for flooring installation by testing for moisture emission rate and alkalinity in accordance with ASTM F 710; obtain instructions if test results are not within limits recommended by manufacturer.
- E. Verify that required floor-mounted utilities are in correct location.
- F. Manufacturer requires that textile composite flooring be inspected prior to installation for proper style, color and potential defects. No claims will be honored if the modules are installed with visible defects. Should there be a problem, call manufacturer's Customer Relations Department (J+J Flooring 800.241.4586).

3.02 PREPARATION

- A. Starting installation constitutes acceptance of sub-floor conditions.
- B. SURFACE PREPARATION- Dust, dirt, debris and non-compatible adhesive must be removed before the installation begins. Surfaces must be smooth and level with all holes and cracks filled with Portland cement-based patch reinforced with polymers. Kinetex Adhesive cannot be applied to any substrate where chemical or solvent-based cleaners have been used.
- C. LATEX ADHESIVES - Old latex adhesives must be mechanically scraped down to a bare residue. Latex adhesive residues must be smooth and level with all holes and cracks filled with a Portland cement-based

patch reinforced with polymers, or encapsulated with APAC ENCapSeal.

Note: Failure to remove or seal, old latex adhesive may cause installation failure, shifting, buckling or edge curling; these conditions will not be covered under warranty.

- D. CUT BACK ADHESIVES - Must be wet mechanically scraped to a minimum residue and encapsulated with APAC ENCapSeal.

Note: Failure to remove or seal old cut back adhesive may cause installation failure, shifting, buckling or edge curling; these conditions will not be covered under warranty.

- E. CONCRETE MOISTURE TESTING and pH TESTING - Substrate moisture testing is not required as Kinetex Modular Flooring using required Kinetex Adhesive is rated. up to 100% RH. Alkalinity tests should be performed per ASTM F 710. The maximum acceptable pH is 12. If reading is above 12, consult with the Customer Relations Team for the best resolution.

SUBFLOORS

- F. New Concrete - New concrete must be fully cured and free of moisture (see ASTM F 710). New concrete requires a curing period of approximately 90 days.

- G. Old Concrete - Old concrete must be checked for moisture. Dry, dusty, porous floors must be primed. *Note: Primers will not correct a moisture problem. For complete information, refer to CRI-104 Installation Standard.*

- H. Wood - Wood floors must be APA flooring grade smooth and level, or CanPly Select Grade. If the floor is uneven, an approved underlayment will be required. Old finishes must be tested for compatibility with adhesives or removed and porous wood primed. Wood floors must receive a roll-on application of Commercialon® Premium Sealer. Follow instructions on the Commercialon® Premium Sealer label.

- I. Terrazzo / Marble - Level all grout lines with Portland cement-based patch reinforced with polymers. Glossy surfaces must be sanded for proper adhesive bond. Waxes and similar finishes must be removed.

- J. Other Hard Surfaces (VCT/VAT) - Tiles must be well secured to the floor or removed. Broken, damaged or loose tiles must be replaced. Waxes and similar finishes must be removed from VCT before applying adhesive. Existing sheet vinyl is not a suitable substrate for modular installation and must be removed.

- K. Raised Access Panel Floors - The panels must be flat, warped panels can result in the carpet modules being off grid. The panel joints must be tight and level. Screws are to be countersunk. Kinetex is not recommended for installation over Raised Access Panel Floors if the panels are frequently accessed.

- L. Gypcrete - Gypcrete subfloors must be fully cured and free of high moisture (see ASTM F 2170-2). Gypcrete requires a curing period of approximately 90 days. Additionally, Gypcrete must be treated using primer in advance of applying adhesive.

- M. Carpet - Remove old carpet and carpet adhesives by scraping or other mechanical means. Any remaining adhesive residues may be covered with a Portland based patching compound or encapsulated with TriSeal Sealer.

3.03 INSTALLATION OF TEXTILE COMPOSITE FLOORING

- A. Install flooring in strict accordance with the finish drawings and manufacturer's installation instructions.

- B. ADHESIVE SYSTEM - Kinetex requires use of Kinetex Adhesive for all Kinetex flooring modules installs.

1. Full Spread Kinetex Adhesive System: Installation requires full spread use of Kinetex Adhesive. The spread rate for Kinetex Adhesive is approximately 640 square feet per four- gallon bucket over a properly prepared floor and must be spread using a 1/16" x 1/16" x 1/16" square notched trowel.

Kinetex adhesive is a transitional hard-set PSA with limited working time. Allow the adhesive to dry until the anchor lines are visible and begin installation. Once the control lines are visible complete the installation within 2 hours, which includes trimming and rolling. Replace the trowel clip each time that a new 4-gallon pail of Kinetex Adhesive is opened. Kinetex adhesive average coverage is 640 SF per 4 gallon pail or 160 SF per one gallon pail.

Note: Inadequate amounts of adhesive can cause modules to shift and move and will not be covered by warranty. Manufacturer will not be responsible for the adhesive bond where other adhesives have been used.

- C. **MODULE PLACEMENT** - Arrows are printed on the module backing to show pile/machine direction. A tight installation without compression is mandatory for optimum performance and appearance of the modular installation. It is critical that each module uniformly touch each adjoining module without a gap. To ensure a clean tight fit, do not pull/tug or slid-in modules, but instead lay each module into its location against the adjoining module. Use your hands to press/form the module into place where the new module meets the previously installed module. **See specific product specifications for approved installation method(s).**

Note: To reposition a Kinetex module during installation, remove it by gently lifting all four sides of the module with a spatula or putty knife, rotating around each side of the module doing a little at a time. The very center of the module should be the last part of the module touching the floor upon removal. Do not stretch a module while it is in the adhesive in order to align next to an adjoin modular. An attempt to stretch will likely result in the module pulling back to its original position. NEVER ATTEMPT TO REMOVE A MODULE ALL AT ONCE BY PULLING ONE OR ONLY TWO SIDES OF THE MODULAR. DOING SO MAY LEAD TO DISTORTING THE MODULE.

- D. **PALLET AND BUNDLE SEQUENCING** - It is very important to install Kinetex modules in the order they were manufactured; this is easily accomplished by selecting pallets in sequential order and following the numbers located on each bundle of modules. Typically, an installation will begin with the lowest bundle numbers and progress through the highest numbers until the project is complete. Installing modules by bundle sequence will assure the most even uniform look possible. (For layout and installation instructions refer to Manufacturer's Kinetex Installation Instructions.)
- E. **STAIRS** - Use single or double undercut stair nosing and cut modules. Then, using full spread Kinetex Adhesive or SRT Tape, install modules on steps and risers, inserting the stair nosing edge and the top of the riser edge of each module into the vinyl undercut.
- F. **COMPLETING INSTALLATION** - To avoid dislodging modules, do not walk on or move furniture onto modules until the area is completely anchored. Roll entire area with 75-100 lb. roller in both directions (north-south and east-west) after completion of installation. It is also required that sheets of plywood or hardboard be laid over the new modular surface when transporting heavy furniture on carts or dollies. As a final step, vacuum the entire area with an upright vacuum.

3.04 INSTALLATION OF ACCESSORIES

- A. Install accessories as required by drawings and per manufacturer's specifications.

3.05 CLEANING AND PROTECTION

- A. Use a moist cloth when wet; if dry, use a solvent based product applied to a towel then worked onto the Kinetex module for removal of contaminants such as adhesive, paint, oil and grease. Follow manufacturer's maintenance guidelines.
- B. Clean and vacuum surfaces.

END OF SECTION

CODE REVIEW

APPLICABLE CODES
 NFPA 1, FIRE CODE 2023
 NFPA 101, LIFE SAFETY CODE 2023
 FLORIDA BUILDING CODE 2023

OCCUPANCY CLASSIFICATION
 BUSINESS (B) / FBC
 SINGLE OCCUPANCY

TYPE OF CONSTRUCTION
 TYPE II B
 NOT SPRINKLED

BUILDING AREA OF RENOVATION
 NEW CONSTRUCTION = NONE
 EXISTING BUILDING OCCUPIABLE 2ND FL = 6,240 SF

GENERAL BUILDING HEIGHTS AND AREAS

MAXIMUM ALLOWABLE HEIGHT	=	55'
ACTUAL BUILDING HEIGHT	=	EXISTING
MAXIMUM ALLOWABLE STORIES ABOVE GRADE	=	2
ACTUAL STORIES ABOVE GRADE	=	EXISTING
MAXIMUM ALLOWABLE BUILDING AREA	=	12,500 SF
ACTUAL BUILDING AREA	=	EXISTING
MEZZANINE	=	NONE

TYPES OF CONSTRUCTION (FIRE RATING REQUIREMENTS) HOURS

PRIMARY STRUCTURAL FRAME	=	0
BEARING WALLS AND PARTITIONS	=	0
EXTERIOR	=	0
INTERIOR	=	0
NON BEARING WALLS AND PARTITIONS	=	0
INTERIOR	=	0
FLOOR CONSTRUCTION	=	0
ROOF CONSTRUCTION	=	0

(EXTERIOR WALLS ARE EXISTING, NO NEW CONSTRUCTION TO BE COMPLETED)

INTERIOR WALL AND CEILING FINISH REQ. (NON SPRINKLERED)

INTERIOR EXIT STAIRWAYS AND RAMP AND EXIT PASSAGEWAYS	=	A
CORRIDORS AND ENCLOSURE FOR EXIT ACCESS STAIRWAYS AND RAMP	=	B
ROOMS AND ENCLOSED SPACES	=	C

CLASS OF MATERIALS FLAME SPREAD INDEX < SMOKE DEV. INDEX

CLASS A	0 - 25	0 - 450
CLASS B	26 - 75	0 - 450
CLASS C	76 - 200	0 - 450

MAXIMUM FLOOR AREA PER OCCUPANT

STORAGE, STOCK, SHIPPING AREAS	300 GROSS
BUSINESS AREAS	150 GROSS
ACCESSORY STORAGE AREAS	300 GROSS
MECHANICAL EQUIPMENT ROOM	300 GROSS

TOTAL COMBINED OCCUPANCY FOR THIS PROJECT: 42

MEANS OF EGRESS SIZING

STAIRS:	
(2) STAIRS REQUIRED	0.3" PER PERSON (44" WIDE MIN.)
DOORS:	0.2" PER PERSON (32" WIDE MIN.)
CORRIDOR:	0.2" PER PERSON (44" WIDE MIN.)
RAMP:	0.2" PER PERSON (44" WIDE MIN.)

NUMBER OF EXITS AND ACCESS DOORWAYS

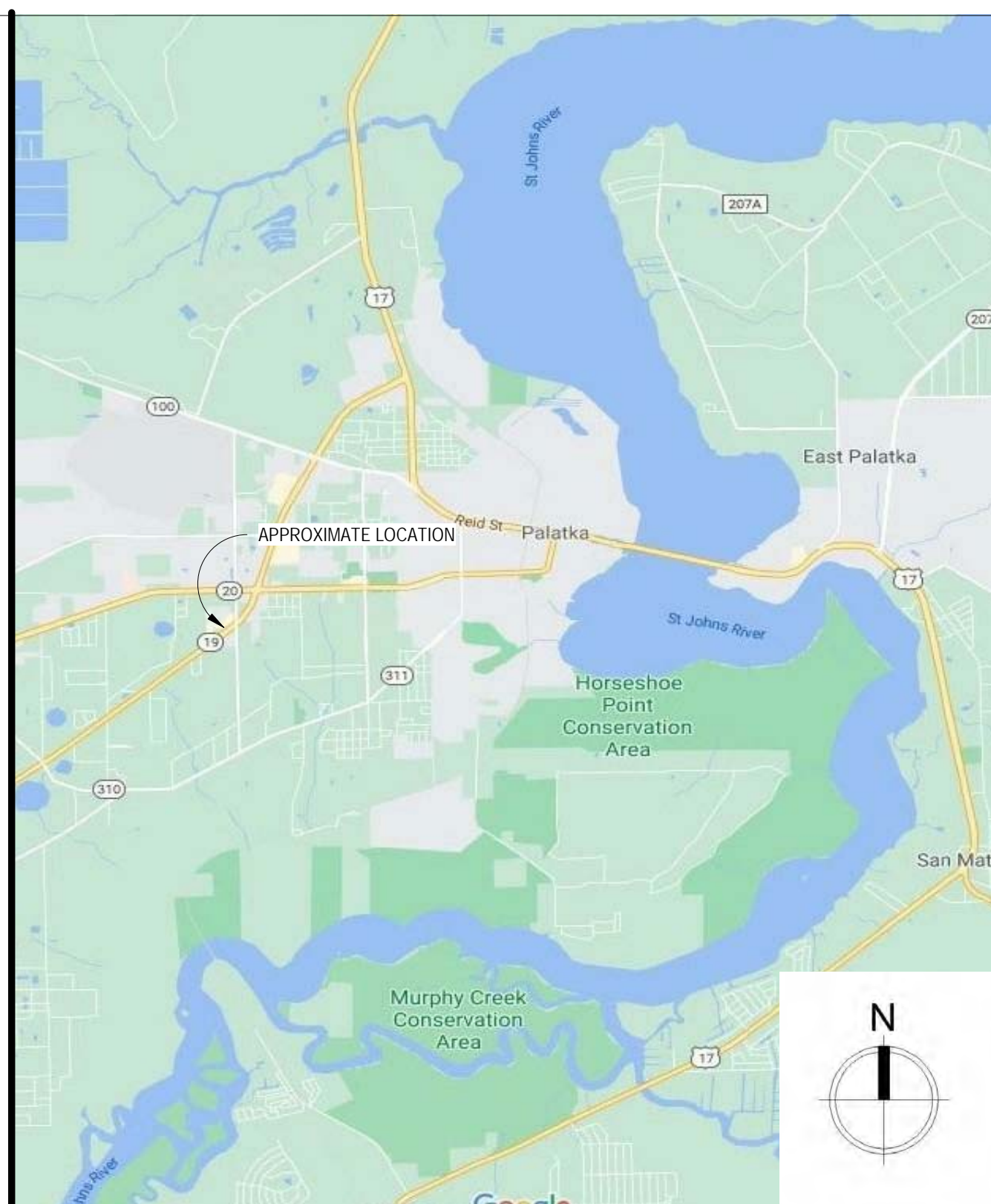
SPACES WITH ONE EXIT OR ACCESS DOORWAY	
OCCUPANCY	B
MAXIMUM OCCUPANT LOAD OF SPACE	49
COMMON PATH OF TRAVEL OL <= 30	75'
COMMON PATH OF TRAVEL OL > 30	75'

DESIGNED EGRESS COMPONENTS

EXIT ACCESS TRAVEL DISTANCE:	200'
CORRIDOR FIRE RESISTANCE RATING	
GREATER THAN 30 (NOT SPRINKLED)	1 HOUR
THIS STRUCTURE DOES NOT HAVE ANY CORRIDORS THAT SERVE MORE THAN 30 PEOPLE	
DEAD END CORRIDOR	20'

LIFE SAFETY PLAN LEGEND

	OCCUPANCY NUMBER		FIRE EXTINGUISHER (SURFACE MOUNT)
	DIRECTION OF EGRESS		FIRE EXTINGUISHER AND CABINET
	SECONDARY EGRESS		EMERGENCY LIGHT
	FIREMAN ACCESS		SMOKE DETECTOR
EC = XXX	EC = EXIT CAPACITY		HEAT DETECTOR
ED = XXX	ED = EXIT DISCHARGE		SEMI-FLUSH MOUNTED FIRE ALARM AUDIO/VISUAL WARNING DEVICE
	1 HOUR FIRE RATED SMOKE BARRIER WALL (SEAL TO UNDERSIDE OF ROOF DECK)		FIRE ALARM VISUAL STROBE
	PATH OF TRAVEL		FLUSH MOUNTED FIRE ALARM PULL STATION
	EXIT SIGN		EXIT SIGN WITH EMERGENCY LIGHTING



RENOVATIONS TO BLDG. G (GYM) SJR STATE COLLEGE

5001 ST JOHNS AVE.
PALATKA, FLORIDA 32177



Revisions		
No.	Desc.	Date

CRG

CRG ARCHITECTS / PALATKA, INC.
 216A ST. JOHN'S AVE.
 PALATKA, FL 32177
 A A 0 0 2 6 0 4
 p. 386 - 325 - 0213
 f. 386 - 328 - 1401

SCOPE OF WORK
 EXISTING BUILDING - LEVEL TWO ALTERATION

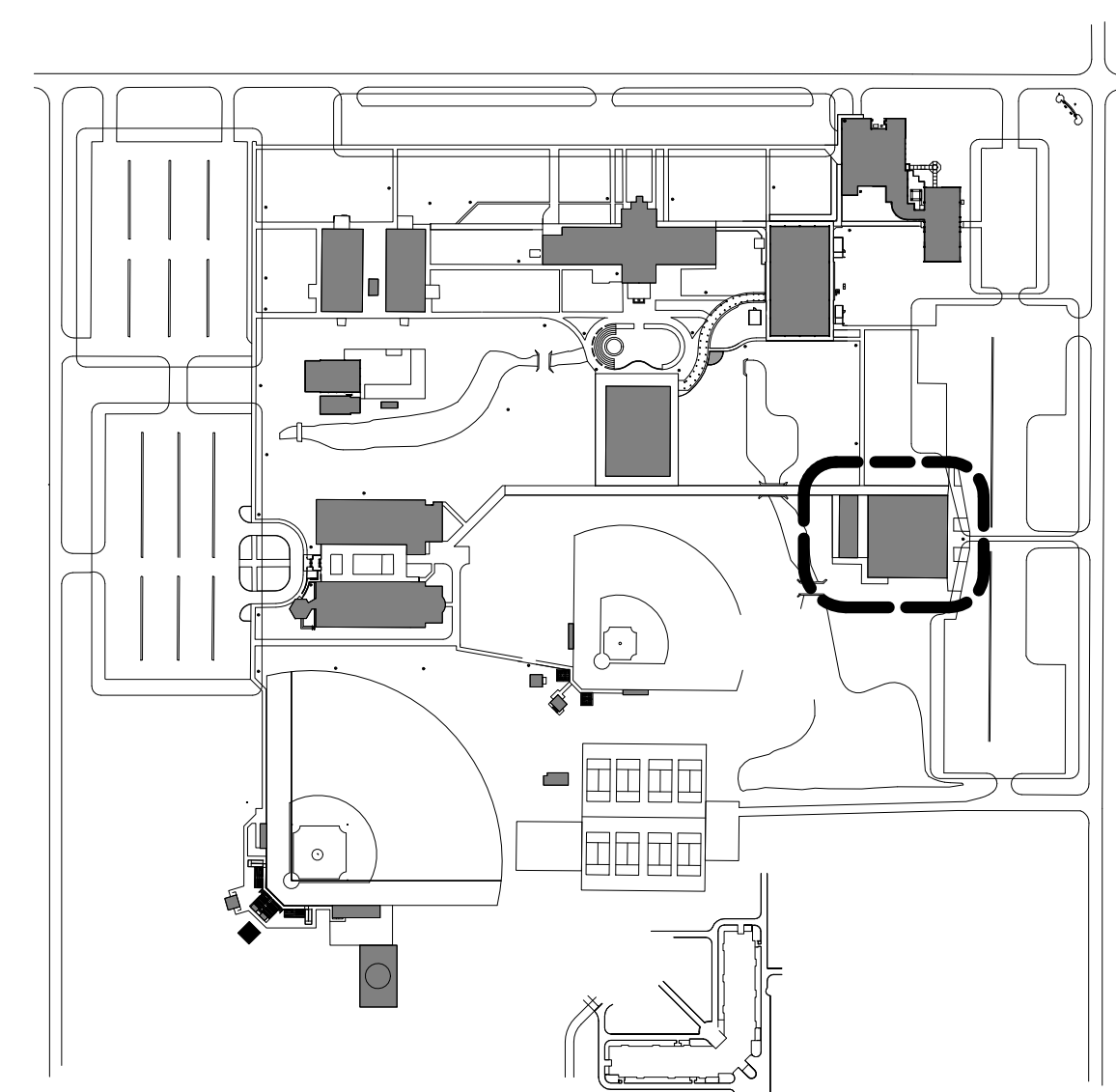
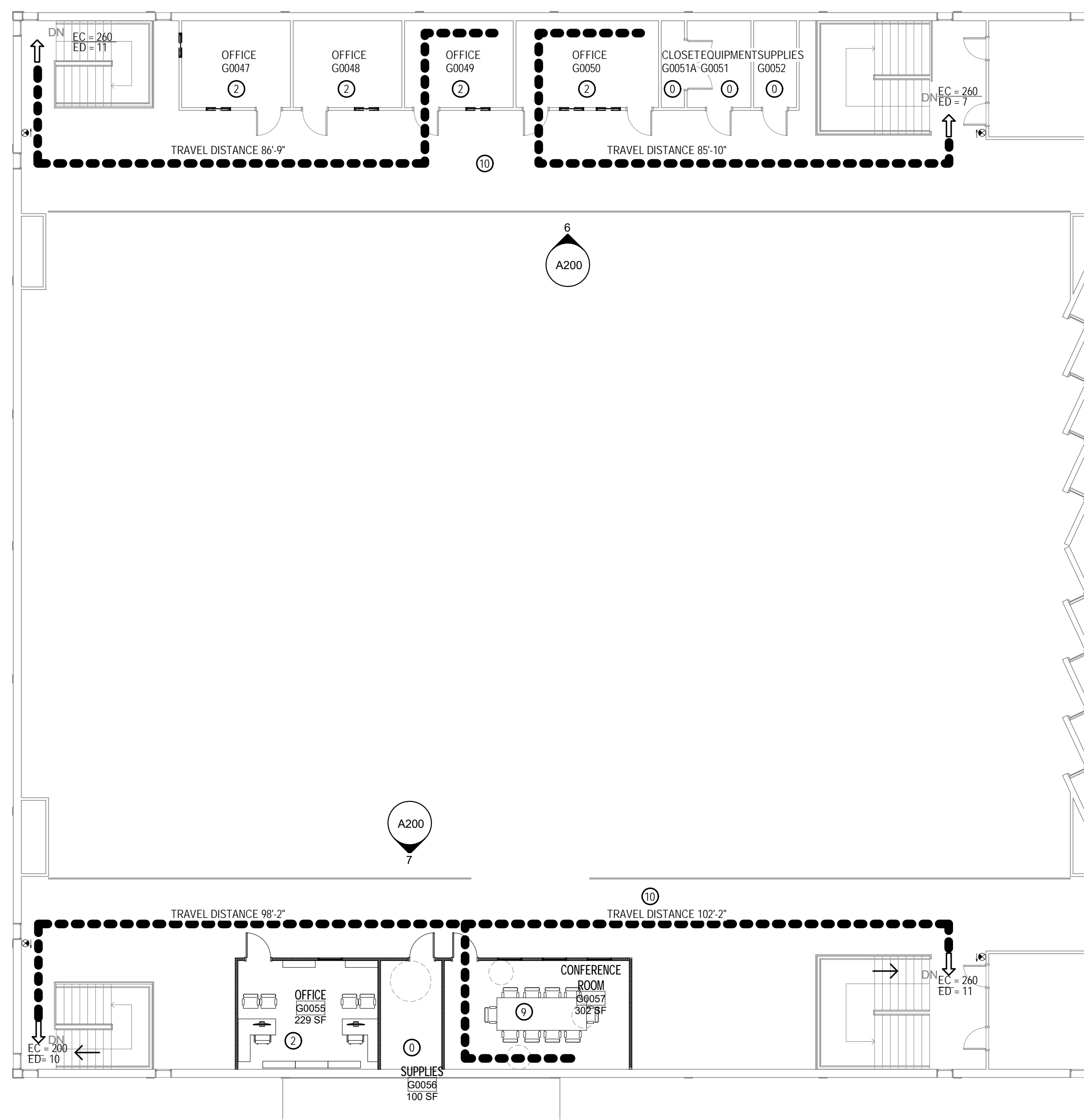
- UPGRADE EXISTING SOUND BATT INSULATION
- ADD (1) OFFICE, (1) SUPPLY CLOSET & (1) CONFERENCE ROOM IN SOUTHSIDE OF 2ND FLOOR

INDEX TO DRAWINGS

Sheet Number	Sheet Name
A001	COVER SHEET / LIFE SAFETY
A002	ABBREVIATIONS & LEGENDS
A101	FLOOR PLAN PROPOSED
A200	REFLECTED CEILING PLAN, INT ELEVATIONS
A300	SECTIONS & DETAILS

Project Status

COVER SHEET / LIFE SAFETY



3 KEY PLAN
SCALE: 1" = 300'-0"

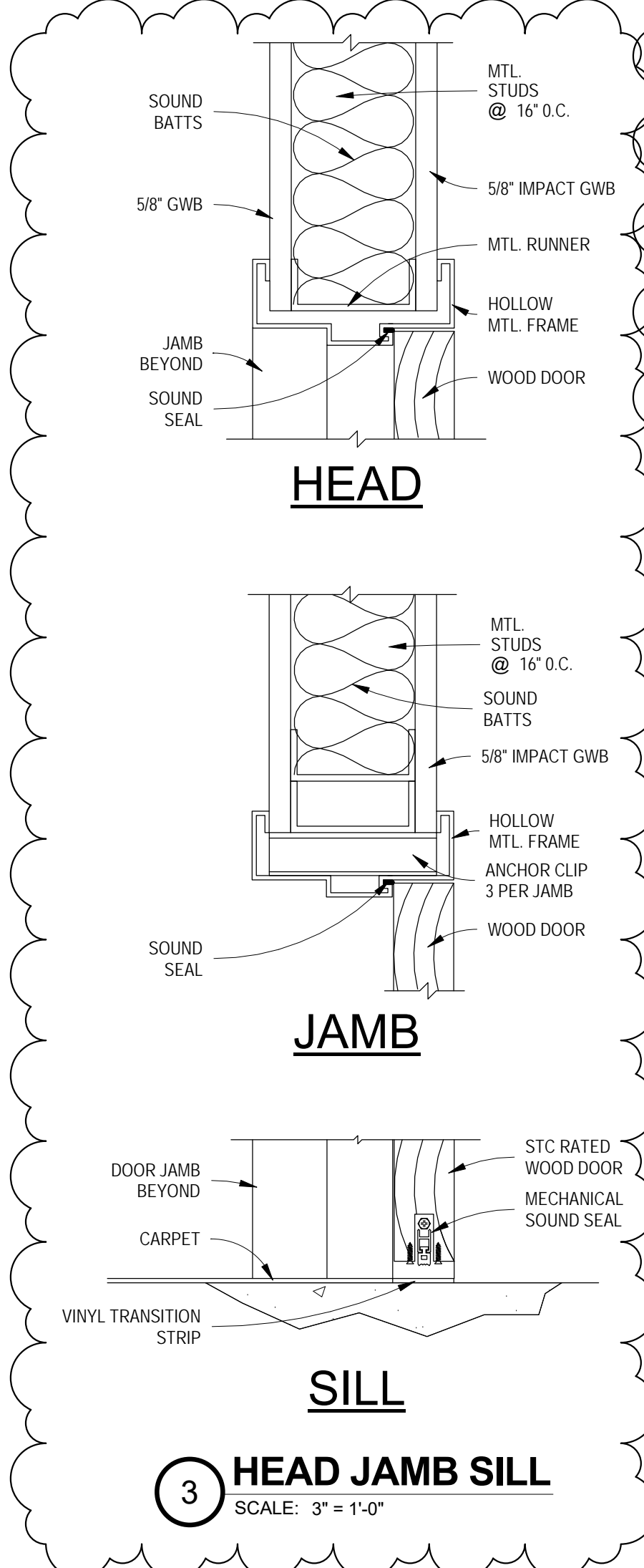
2 LIFE SAFETY
SCALE: 3/32" = 1'-0"

STATEMENT OF COMPLIANCE:
 To the best of my knowledge, these construction documents are in compliance with criteria set forth in the current edition of the Florida Building Code and Florida Statutes.

Seal / Signature

Project number 015ZA08
 Date 11-19-25
 Drawn by TB
 Checked by JK

A001
 OF SHEETS
 Scale As indicated



Room Schedule						
Number	Name	Floor Finish	Base Finish	Wall Finish	Ceiling Finish	Comments
G0043	MECH	-	VINYL	GWB, IMPACT GWB	-	
G0047	OFFICE	CPT	VINYL	GWB, IMPACT GWB	AT-1	
G0048	OFFICE	CPT	VINYL	GWB, IMPACT GWB	AT-1	
G0049	OFFICE	CPT	VINYL	GWB, IMPACT GWB	AT-1	
G0050	OFFICE	CPT	VINYL	GWB, IMPACT GWB	AT-1	
G0051	EQUIPMENT	CPT	VINYL	GWB, IMPACT GWB	AT-1	
G0051A	CLOSET	CPT	VINYL	GWB, IMPACT GWB	AT-1	
G0052	SUPPLIES	CPT	VINYL	GWB, IMPACT GWB	AT-1	
G0055	OFFICE	CPT	VINYL	GWB, IMPACT GWB	AT-1	
G0056	SUPPLIES	CPT	VINYL	GWB, IMPACT GWB	AT-1	
G0057	CONFERENCE ROOM	CPT	VINYL	GWB, IMPACT GWB	AT-1	

DOOR SCHEDULE									
Mark	W	H	T	Frame Material	Door Type	Door Material	Hardware	Fire Rating	Comments
01	3'-0"	7'-0"	1 3/4"	HM	HALF-LITE	WD	OFFICE	0	2,7,8
02	3'-0"	7'-0"	1 3/4"	HM	SOLID	WD	SUPPLIES	0	2,7
03	3'-0"	7'-0"	1 3/4"	HM	HALF-LITE	WD	OFFICE	0	2,7,8
04	3'-0"	7'-0"	1 3/4"	HM	HALF-LITE	WD	OFFICE	0	2,7,8
05	3'-0"	7'-0"	1 3/4"	HM	HALF-LITE	WD	OFFICE	0	2,7,8
06	3'-0"	7'-0"	1 3/4"	HM	HALF-LITE	WD	OFFICE	0	2,7,8
07	3'-0"	7'-0"	1 3/4"	HM	HALF-LITE	WD	OFFICE	0	2,7,8
08	3'-0"	7'-0"	1 3/4"	HM	HALF-LITE	WD	OFFICE	0	2,7,8
09	3'-0"	7'-0"	1 3/4"	HM	SOLID	WD	SUPPLIES	0	2,7
10	3'-0"	7'-0"	1 3/4"	HM	SOLID	WD	SUPPLIES	0	2,7

DOOR SCHEDULE LEGEND

2 PANEL 2 PANEL WOOD DOOR (CHERRY) STOREFRONT
 SF METAL (GALV.) W/ INSULATED CORE GLASS
 GL SOLID CORE WOOD (PRE-FINISHED)
 SC/WD HOLLOW METAL
 HM ALUMINUM
 ALUM ALUMINUM
 E EXISTING
 E REL EXISTING RELOCATED
 THRESH THRESHOLD
 MET METAL
 WD WOOD
 FL FLUSH
 F FLUSH
 NL NARROW-LITE

DOOR SCHEDULE NOTES

1. PROVIDE NEW HOLLOW CORE PRE-FINISHED 2 PANEL WOOD DOORS AND FRAME.
2. PROVIDE NEW SOLID CORE PRE-FINISHED FLUSH WOOD DOORS AND HM FRAME.
3. PROVIDE NEW STOREFRONT DOORS AND/OR WINDOWS AND FRAME.
4. PROVIDE NEW ALUM. THRESH (1/2" MAX HEIGHT) 1 HOUR FIRE RATED
5. PROVIDE NEW MARBLE THRESH
6. PROVIDE LVT TRANSITION STRIP
7. SOUND RATED DOOR-LITE KIT STC-35
8. PROVIDE ADA COMPLIANT DOOR OPENING DEVICE

GENERAL NOTE: CONTRACTOR SHALL KEY NEW DOORS ALL ON THE SAME KEYING SYSTEM. CO ORDINATE REQUIRED KEYING WITH OWNER.

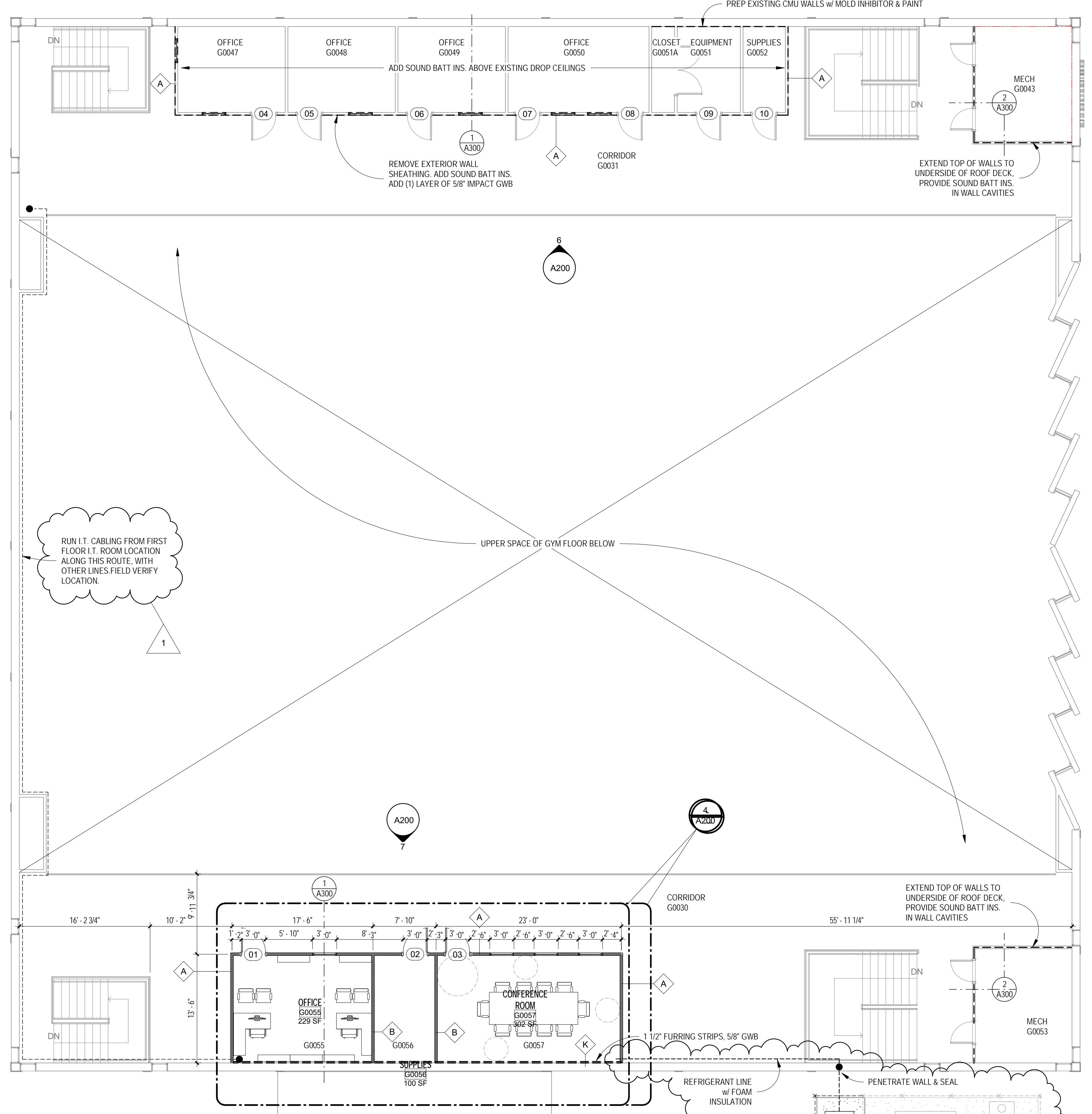
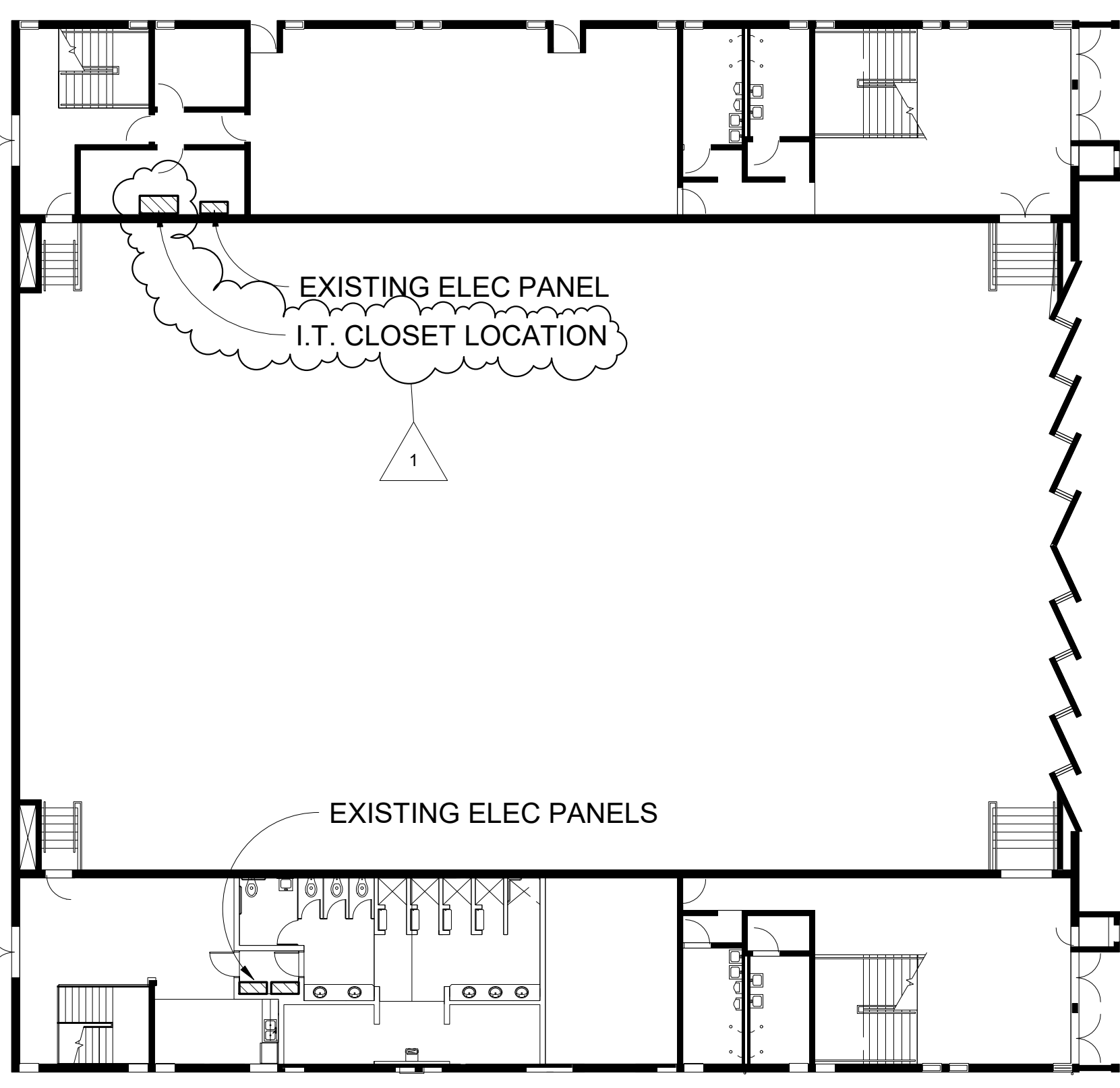
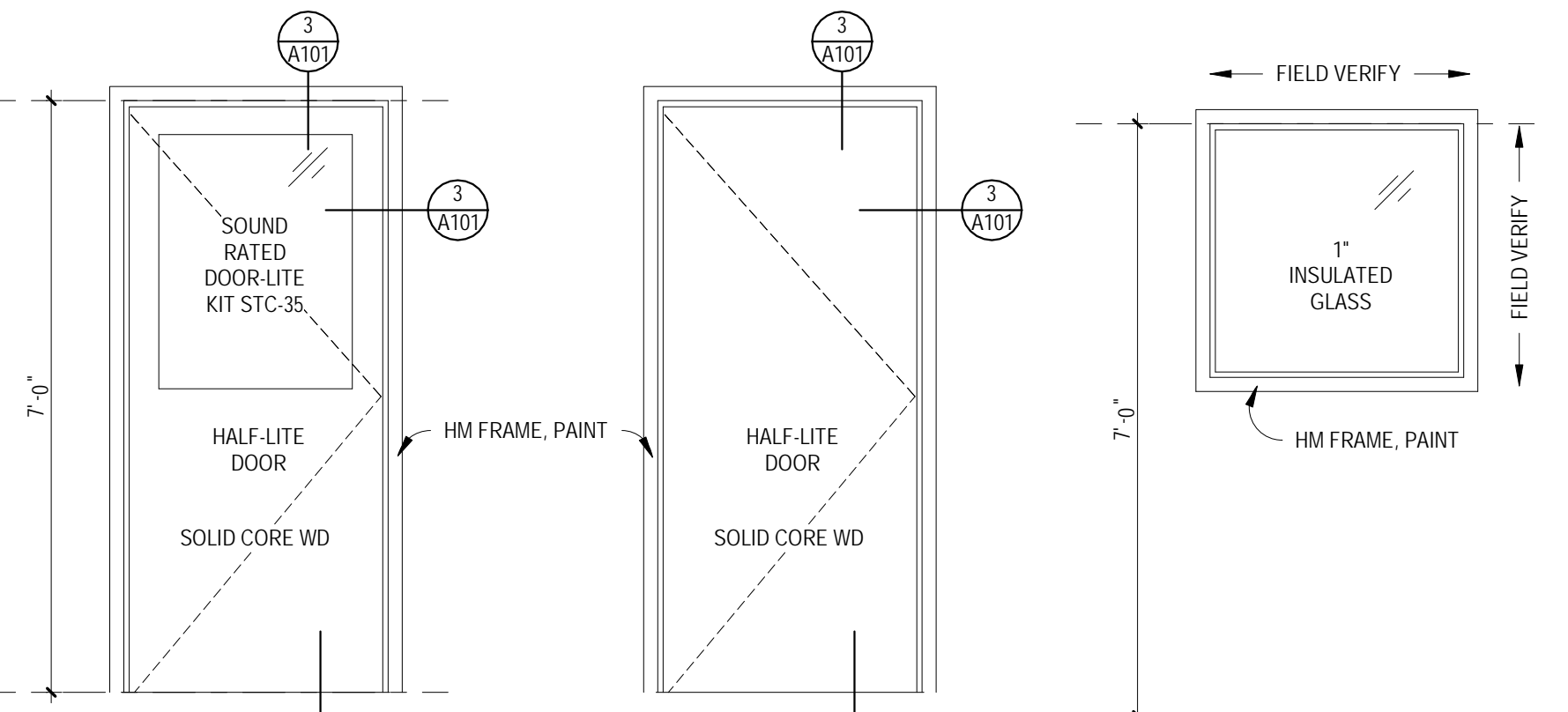
FINISH SCHEDULE LEGEND

CONC CONCRETE (TROWEL FINISH, SEAL)
 CT CERAMIC FLOOR TILE
 VCT VINYL COMPOSITION TILE
 WD 6" WOOD BASE
 E EXISTING
 LP LAMINATE PLASTIC
 CPT CARPET TILE

WD WOOD
 GL GLAZING OR GLASS
 GWB GYPSUM WALL BOARD (PAINTED)
 CMU CONCRETE MASONRY UNITS (PAINTED)
 EXP EXPOSED
 MRGWB MOISTURE RESISTANT GYPSUM WALL BOARD
 AT-1 CEILING TILE (24" x 24" REGULAR TILE)

FINISH SCHEDULE NOTES

1. GWB AT WALLS SHALL HAVE A FINISH THAT MATCHES EXISTING ADJACENT WALL TEXTURE
2. PAINT SHEEN AT WALLS SHALL BE EGGSHELL
3. GWB AT CEILINGS SHALL HAVE A SMOOTH LEVEL 4 FINISH
4. EXISTING WALLS TO BE PROTECTED, PATCH AND REPAIR
5. PROVIDE (2) COLORS OF PAINT AT WALLS, ARCHITECT SHALL PROVIDE DIRECTION
6. 1" X 2" CERAMIC FLOOR TILE (1 COLOR)
7. 1" X 2" CERAMIC WALL TILE (2 COLORS)
8. PROVIDE 4" ENCAPSULATED BATT INSULATION OVER ENTIRE CEILING
9. PROVIDE WOOD CHAIR RAIL AT ALL WALL SERVICES
10. PROVIDE LAP SIDING WAINSCOT AND CHAIR RAIL PAINT SHEEN AT WALLS SHALL BE SEMI-GLOSS
- 11.



Revisions		
No.	Desc.	Date
1	BID CLARIFICATION	12-22-25
5		

CRG

CRG ARCHITECTS / PALATKA, INC.
 216A ST. JOHN'S AVE.
 PALATKA, FL 32177
 A A 0 0 0 2 6 0 4
 p. 386 - 325 - 0213
 f. 386 - 328 - 1401

Project Status

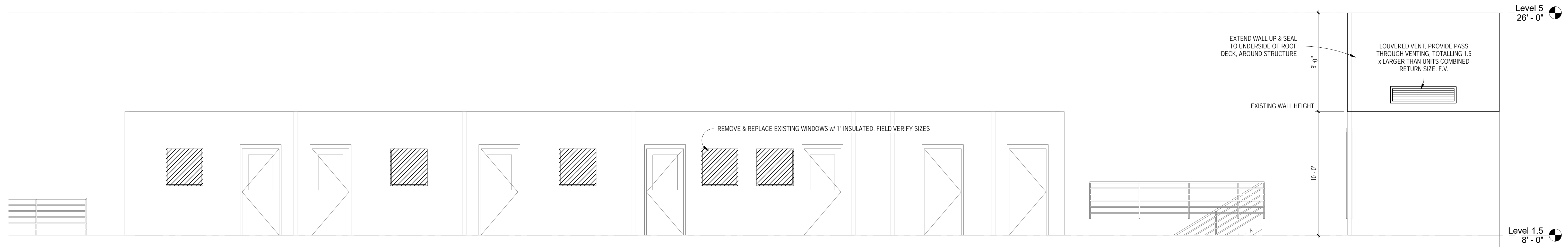
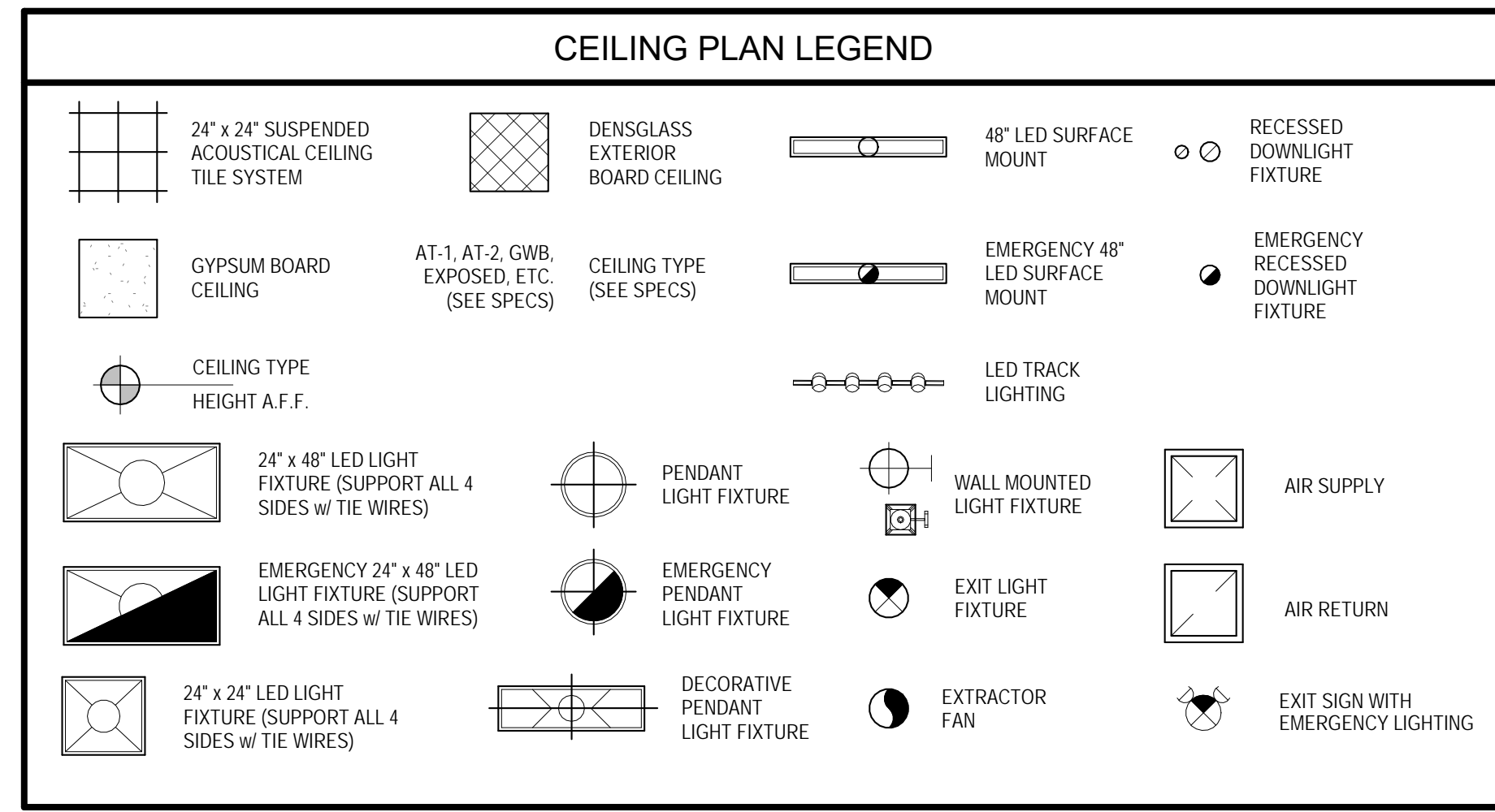
FLOOR PLAN PROPOSED

ST JOHNS RIVER STATE COLLEGE GYM RENOVATIONS

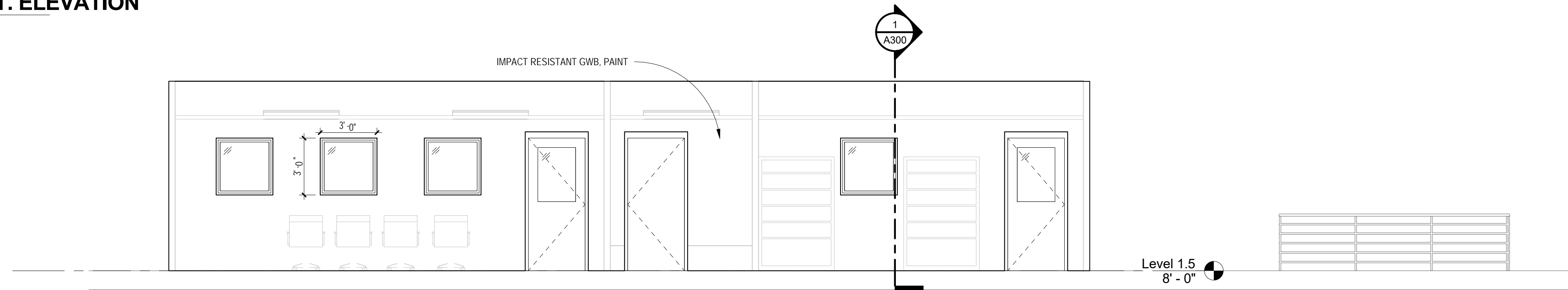
Seal / Signature

Project number 015ZA08
 Date 11-19-25
 Drawn by TB
 Checked by JK

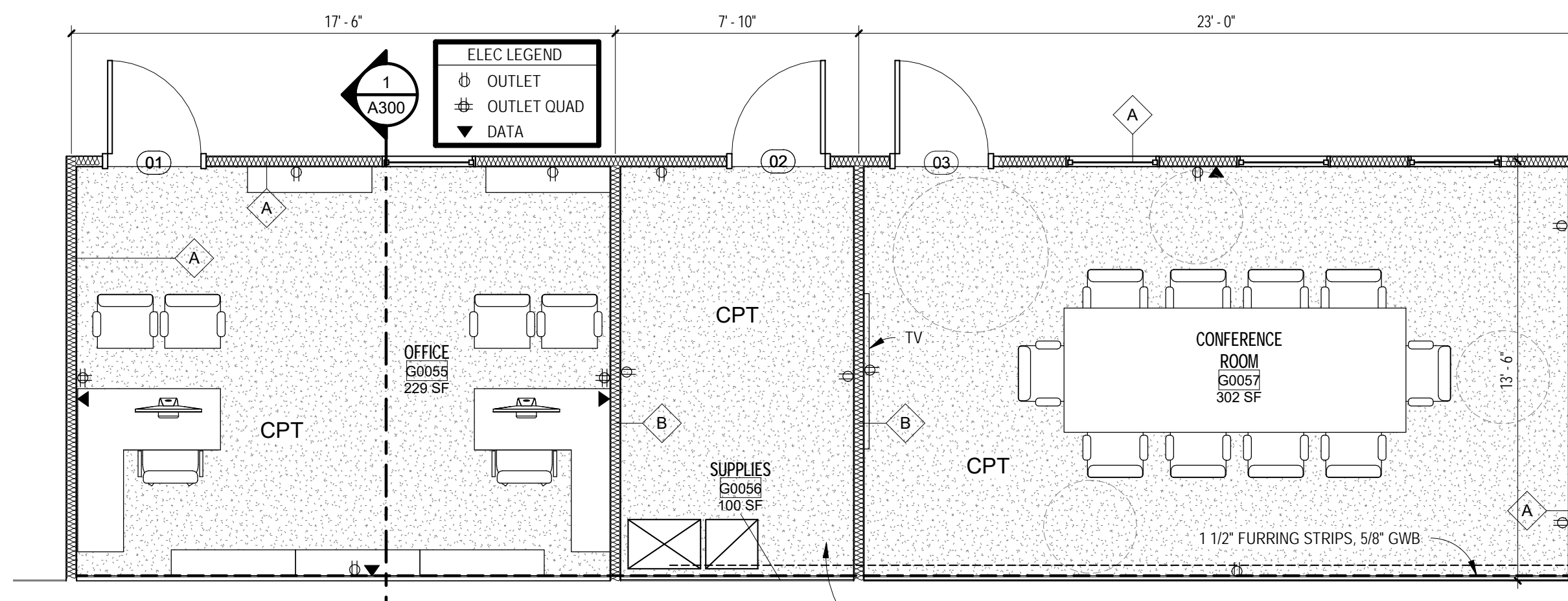
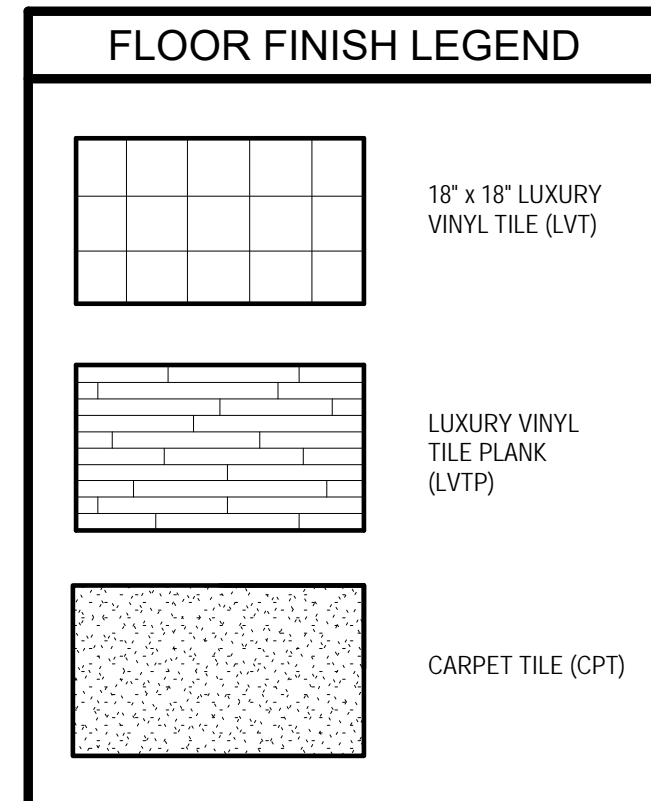
A101
 OF SH EETS
 Scale As indicated



6 NORTH INT. ELEVATION
SCALE: 1/4" = 1'-0"

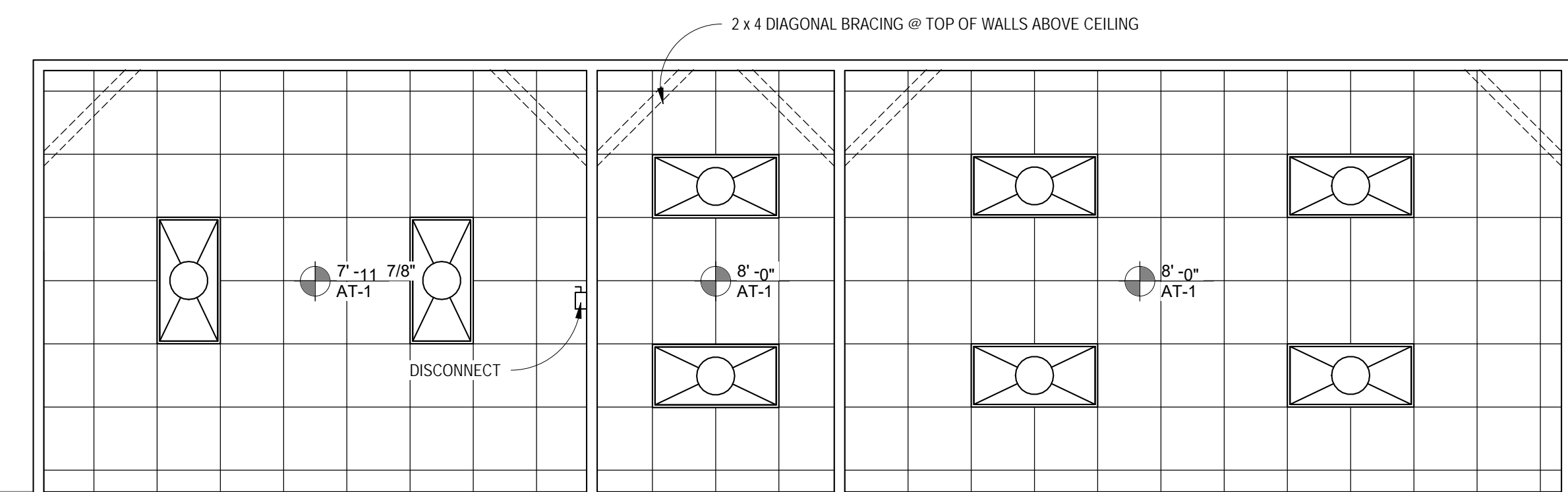


7 SOUTH INTERIOR ELEVATION
SCALE: 1/4" = 1'-0"



4 PARTIAL FLOOR PLAN SOUTH
SCALE: 1/4" = 1'-0"

NOTE: CONTRACTOR SHALL PROVIDE ALL DUCTS, VENTS, ETC. PER CODE, NECESSARY TO PROVIDE HEATING, COOLING TO THESE (3) SPACES



1 REFLECTED CEILING PLAN
SCALE: 1/4" = 1'-0"

GENERAL NOTE: MECHANICAL EQUIPMENT CONTRACTOR SHALL SIZE DIFFUSERS APPROPRIATELY TO PROVIDE AIR AT THESE 3 SPACES

Revisions		
No.	Desc.	Date

CRG

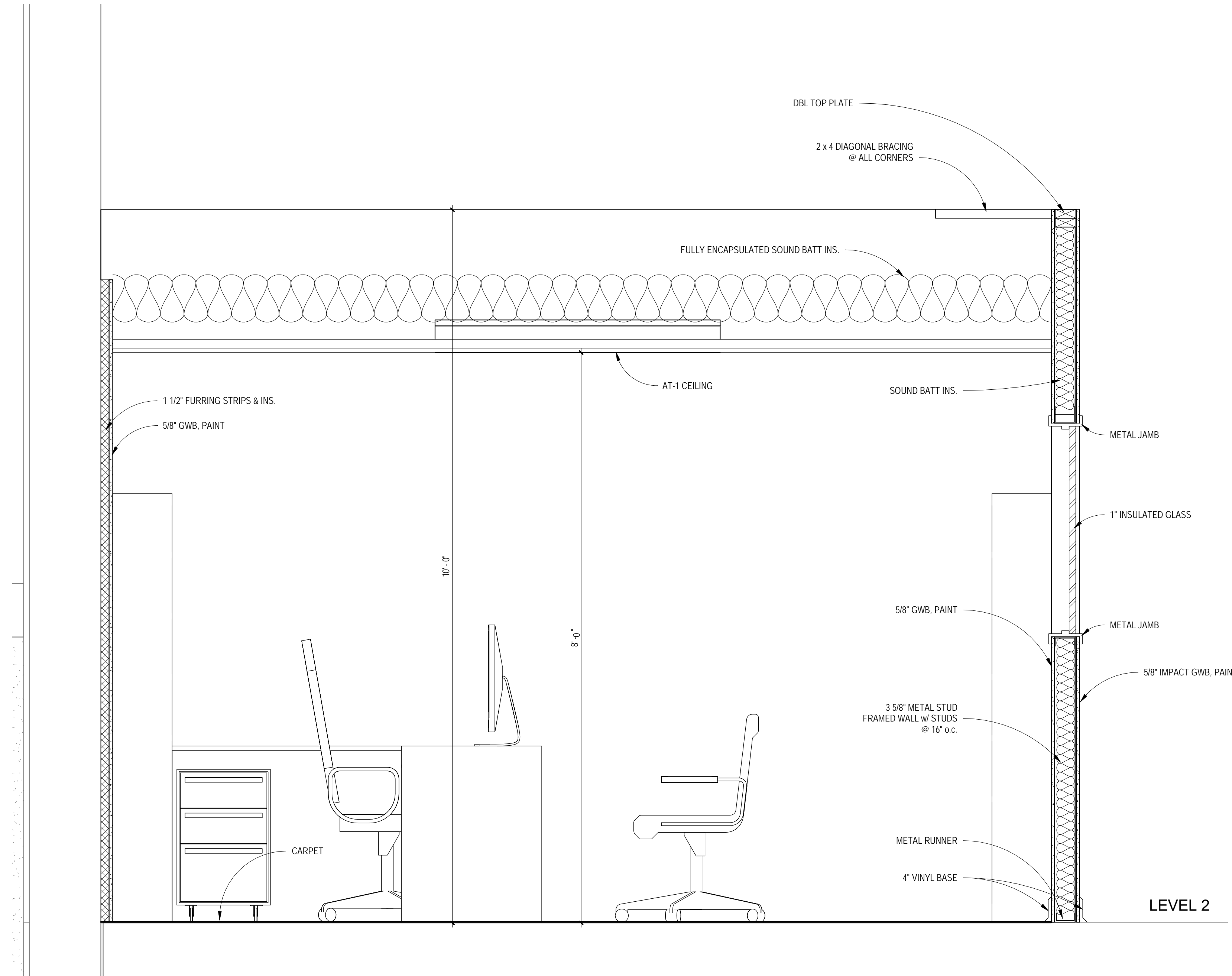
CRG ARCHITECTS / PALATKA, INC.
216A ST. JOHN'S AVE.
PALATKA, FL 32177
A A 0 0 2 6 0 4
p. 386 - 325 - 0213
f. 386 - 328 - 1401

Project Status

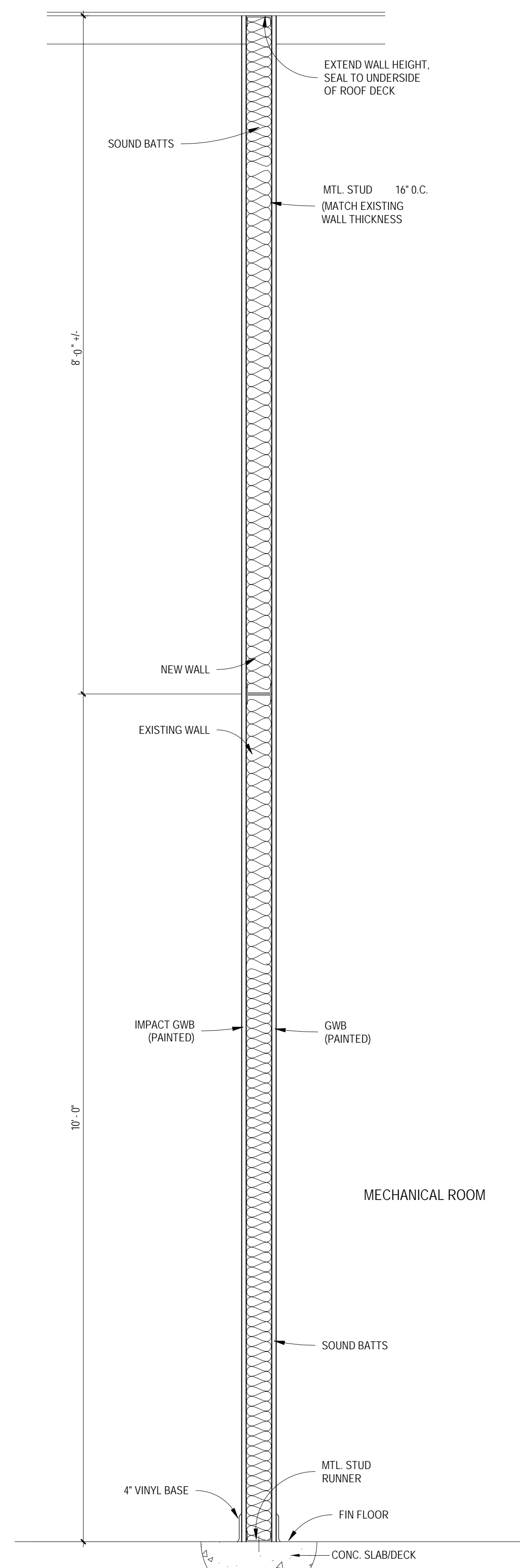
REFLECTED
CEILING PLAN,
INT ELEVATIONS

ST JOHNS RIVER STATE COLLEGE
GYM RENOVATIONS

Seal / Signature	
Project number	015ZA08
Date	11-19-25
Drawn by	TB
Checked by	JK
A200	
OF SHEETS	
Scale As indicated	



1 OFFICE SECTION
SCALE: 1" = 1'-0"



2 MECH ROOM WALL SECTION
SCALE: 1" = 1'-0"

Revisions		
No.	Desc.	Date

CRG

CRG ARCHITECTS / PALATKA, INC.
216A ST. JOHN'S AVE.
PALATKA, FL 32177
A A 0 0 2 6 0 4
p. 386 - 325 - 0213
f. 386 - 328 - 1401

Project Status

SECTIONS & DETAILS

ST JOHNS RIVER STATE COLLEGE GYM RENOVATIONS

Seal / Signature

Project number 015ZA08
Date 11-19-25
Drawn by TB
Checked by JK

A300
OF SHEETS
Scale 1" = 1'-0"