

CODE REVIEW

APPLICABLE CODES

NFPA 1, FIRE CODE 2023  
NFPA 101, LIFE SAFETY CODE 2023  
FLORIDA BUILDING CODE 2023

OCCUPANCY CLASSIFICATION

BUSINESS (B) / FBC  
SINGLE OCCUPANCY

TYPE OF CONSTRUCTION

TYPE II B  
NOT SPRINKLED

BUILDING AREA OF RENOVATION

NEW CONSTRUCTION NONE  
EXISTING BUILDING OCCUPIABLE 2ND FL 6,240 SF

GENERAL BUILDING HEIGHTS AND AREAS

MAXIMUM ALLOWABLE HEIGHT = 55' EXISTING  
ACTUAL BUILDING HEIGHT = 55' EXISTING  
MAXIMUM ALLOWABLE STORIES ABOVE GRADE = 2 EXISTING  
ACTUAL STORIES ABOVE GRADE = 2 EXISTING  
MAXIMUM ALLOWABLE BUILDING AREA = 12,500 SF EXISTING  
ACTUAL BUILDING AREA = 12,500 SF EXISTING  
MEZZANINE = NONE

TYPES OF CONSTRUCTION (FIRE RATING REQUIREMENTS)

PRIMARY STRUCTURAL FRAME = 0 HOURS  
BEARING WALLS AND PARTITIONS = 0 HOURS  
EXTERIOR = 0 HOURS  
INTERIOR = 0 HOURS  
NON BEARING WALLS AND PARTITIONS = 0 HOURS  
INTERIOR = 0 HOURS  
FLOOR CONSTRUCTION = 0 HOURS  
ROOF CONSTRUCTION = 0 HOURS

(EXTERIOR WALLS ARE EXISTING, NO NEW CONSTRUCTION TO BE COMPLETED)

INTERIOR WALL AND CEILING FINISH REQ. (NON SPRINKLERED)

INTERIOR EXIT STAIRWAYS AND RAMP AND EXIT PASSAGEWAYS = A  
CORRIDORS AND ENCLOSURE FOR EXIT ACCESS = B  
STAIRWAYS AND RAMP = B  
ROOMS AND ENCLOSED SPACES = C

CLASS OF MATERIALS FLAME SPREAD INDEX < SMOKE DEV. INDEX

CLASS A 0 - 25 0 - 450  
CLASS B 26 - 75 0 - 450  
CLASS C 76 - 200 0 - 450

MAXIMUM FLOOR AREA PER OCCUPANT

STORAGE, STOCK, SHIPPING AREAS 300 GROSS  
BUSINESS AREAS 150 GROSS  
ACCESSORY STORAGE AREAS 300 GROSS  
MECHANICAL EQUIPMENT ROOM 300 GROSS

TOTAL COMBINED OCCUPANCY FOR THIS PROJECT: 42

MEANS OF EGRESS SIZING

STAIRS:  
(2) STAIRS REQUIRED 0.3' PER PERSON (44" WIDE MIN.)  
DOORS: 0.2' PER PERSON (32" WIDE MIN.)  
CORRIDOR: 0.2' PER PERSON (44" WIDE MIN.)  
RAMPS: 0.2' PER PERSON (44" WIDE MIN.)

NUMBER OF EXITS AND ACCESS DOORWAYS

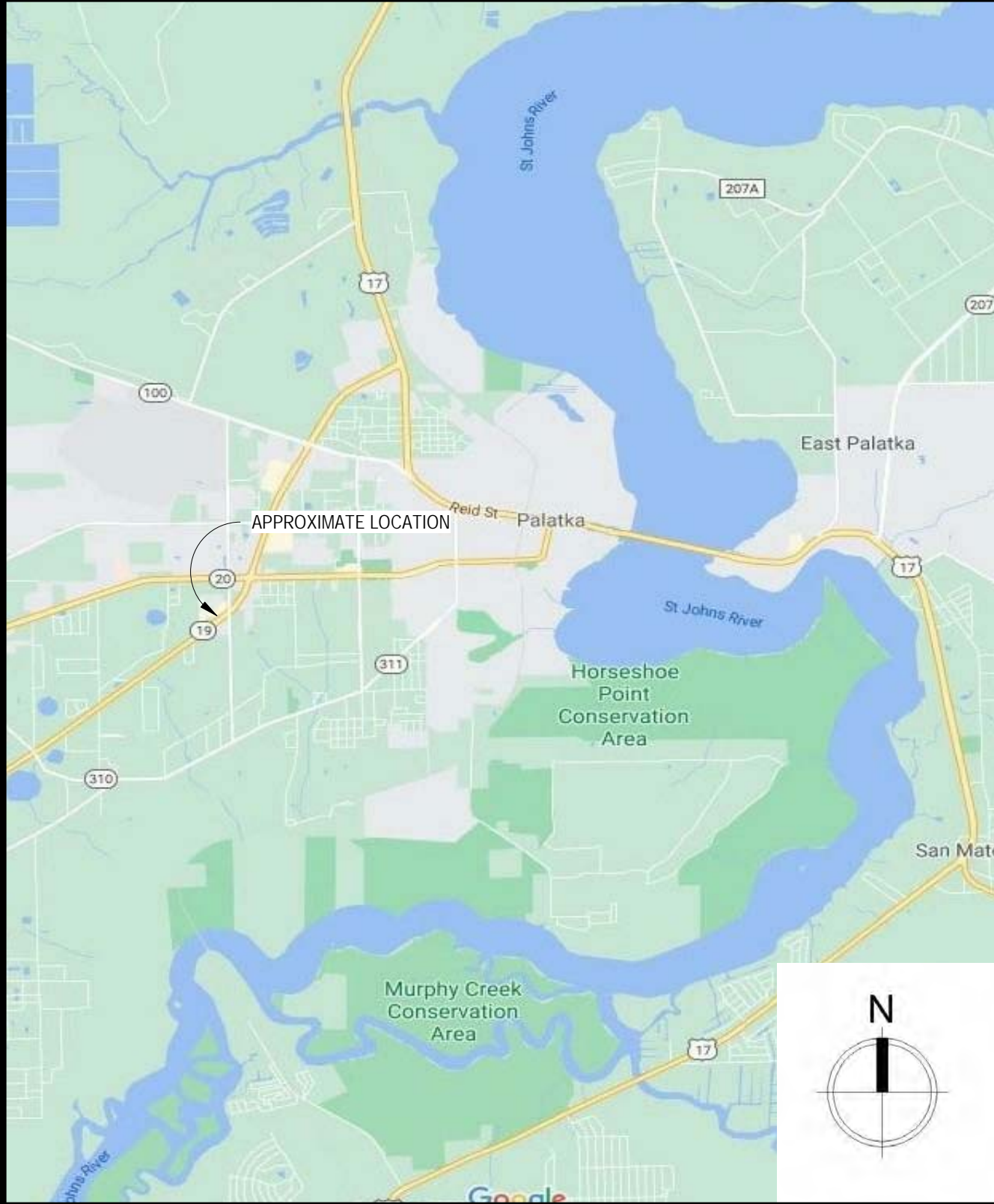
SPACES WITH ONE EXIT OR ACCESS DOORWAY  
OCCUPANCY 8  
MAXIMUM OCCUPANT LOAD OF SPACE 49  
COMMON PATH OF TRAVEL OL <= 30 75'  
COMMON PATH OF TRAVEL OL > 30 75'

DESIGNED EGRESS COMPONENTS

EXIT ACCESS TRAVEL DISTANCE: 200'  
CORRIDOR FIRE RESISTANCE RATING: GREATER THAN 30 (NOT SPRINKLED) 1 HOUR  
\* THIS STRUCTURE DOES NOT HAVE ANY CORRIDORS THAT SERVE MORE THAN 30 PEOPLE  
DEAD END CORRIDOR 20'

LIFE SAFETY PLAN LEGEND

① OCCUPANCY NUMBER  
➡ DIRECTION OF EGRESS  
➡ SECONDARY EGRESS  
➡ FIREMAN ACCESS  
EC = XXX  
ED = XXX  
- - - 1 HOUR FIRE RATED SMOKE BARRIER WALL (SEAL TO UNDERSIDE OF ROOF DECK)  
●●●●● PATH OF TRAVEL  
⊙ EXIT SIGN  
FE FIRE EXTINGUISHER (SURFACE MOUNT)  
FEC FIRE EXTINGUISHER AND CABINET  
◑ EMERGENCY LIGHT  
S SMOKE DETECTOR  
H HEAT DETECTOR  
H SEMI-FLUSH MOUNTED FIRE ALARM AUDIO/VISUAL WARNING DEVICE  
F-1 FIRE ALARM VISUAL STROBE  
P FLUSH MOUNTED FIRE ALARM PULL STATION  
⊙ EXIT SIGN WITH EMERGENCY LIGHTING



# RENOVATIONS TO THE SECOND FLOOR OF THE EXISTING GYM

## ST. JOHNS RIVER STATE COLLEGE

5001 ST JOHNS AVE. PALATKA, FLORIDA 32177



SCOPE OF WORK

- EXISTING BUILDING - LEVEL TWO ALTERATION
- UPGRADE EXISTING SOUND BATT INSULATION
  - ADD (1) OFFICE, (1) SUPPLY CLOSET & (1) CONFERENCE ROOM IN SOUTHSIDE OF 2ND FLOOR

INDEX TO DRAWINGS

Sheet Number	Sheet Name
A001	COVER SHEET / LIFE SAFETY
A002	ABBREVIATIONS & LEGENDS
A101	FLOOR PLAN PROPOSED
A200	REFLECTED CEILING PLAN, INT ELEVATIONS
A300	SECTIONS & DETAILS

## DISTRICT OF BOARD TRUSTEES

RICH KOMANDO, J.D.  
NICK PRIMROSE, J.D.  
W.J. (JUD) SAPP, JR.  
CHERESEE STEWART  
WENDELL D. DAVIS  
CYRUS ZOMORODIAN, J.D.  
JEREMIAH BLOCKER, J.D.  
JOE H. PICKENS, J.D.

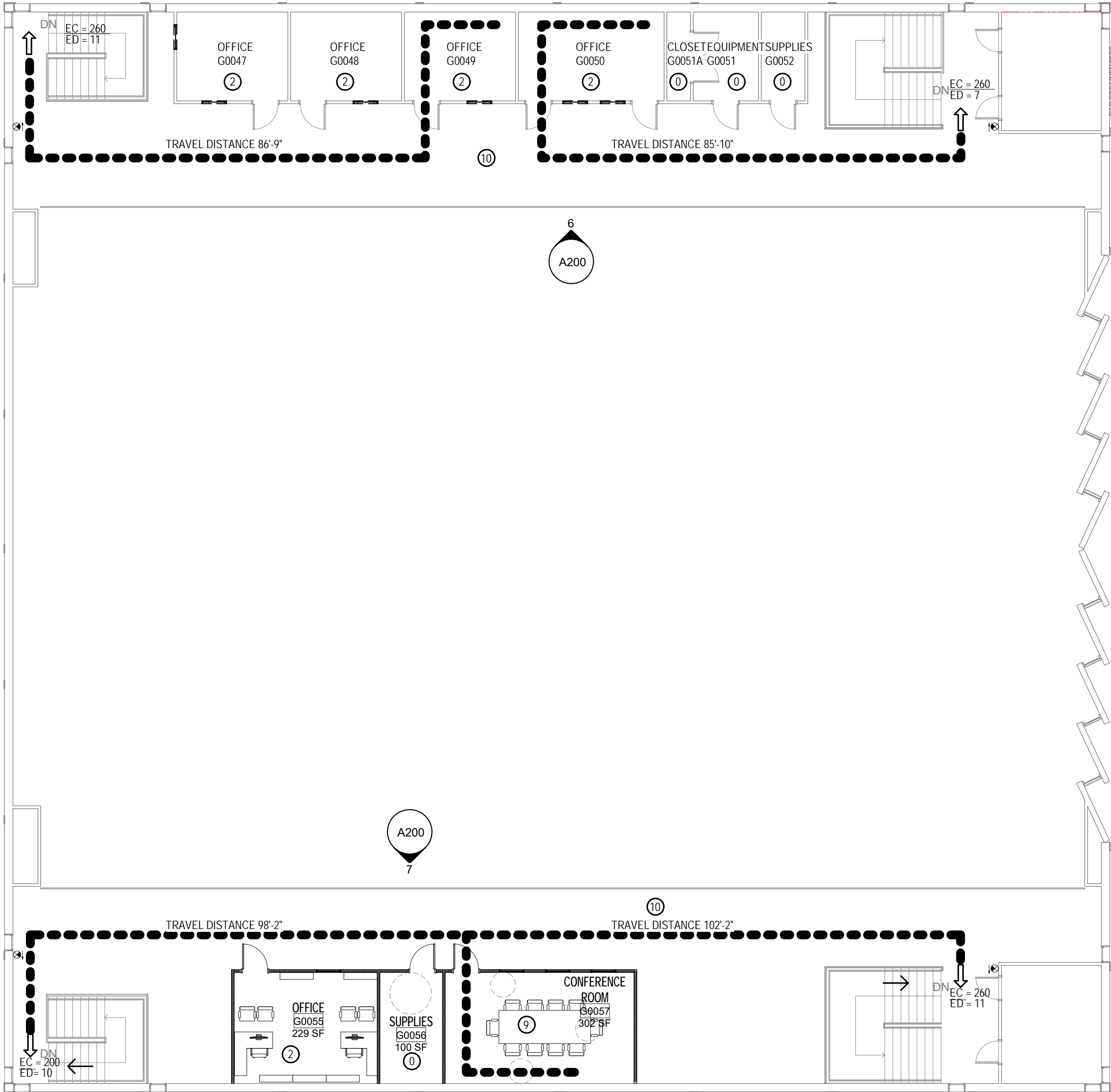
CHAIR  
VICE CHAIR

BOARD ATTORNEY  
EXECUTIVE SECRETARY

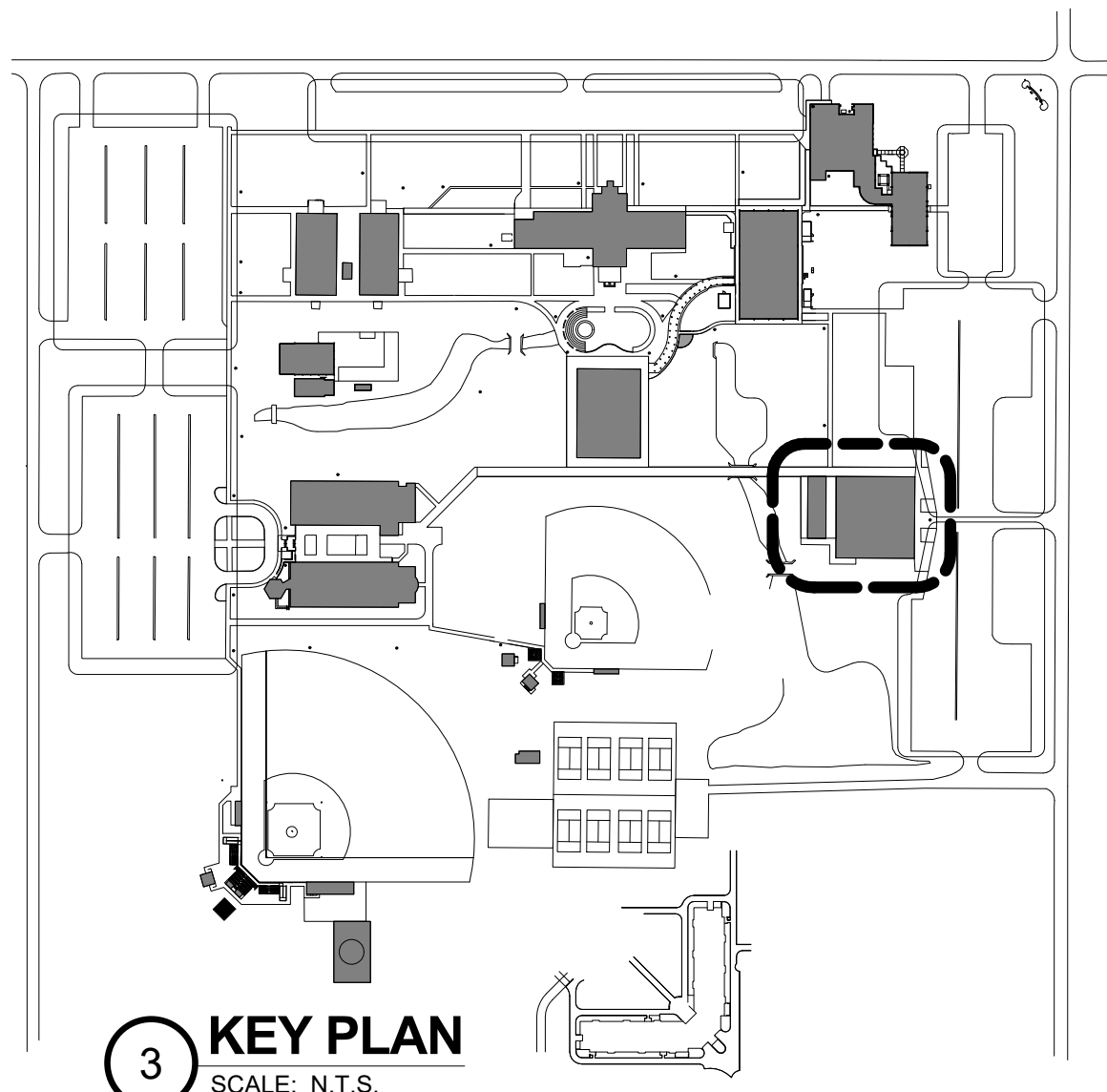
## ADMINISTRATION

JOE H. PICKENS, J.D.

PRESIDENT



2 LIFE SAFETY  
SCALE: 3/32" = 1'-0"



STATEMENT OF COMPLIANCE:

To the best of my knowledge, these construction documents are in compliance with criteria set forth in the current edition of the Florida Building Code and Florida Statutes.

Revisions		
No.	Desc.	Date

**CRG**

CRG ARCHITECTS  
/ PALATKA, INC.  
216A ST. JOHN'S AVE.  
PALATKA, FL 32177  
A A 0 0 0 2 6 0 4  
p. 386 - 325 - 0213  
f. 386 - 328 - 1401

BID SET

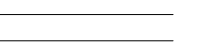
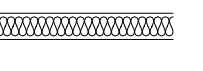
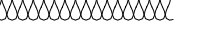


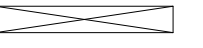
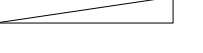

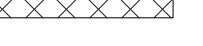
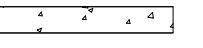

COVER SHEET /  
LIFE SAFETY

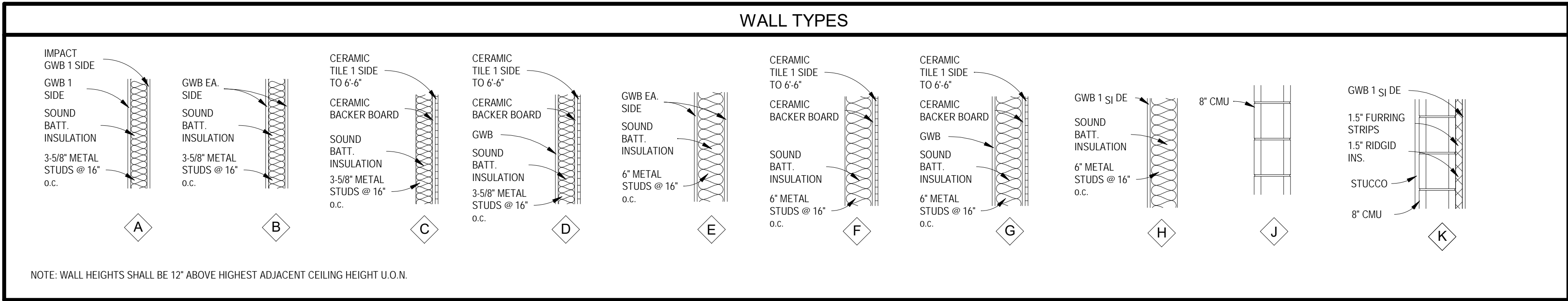
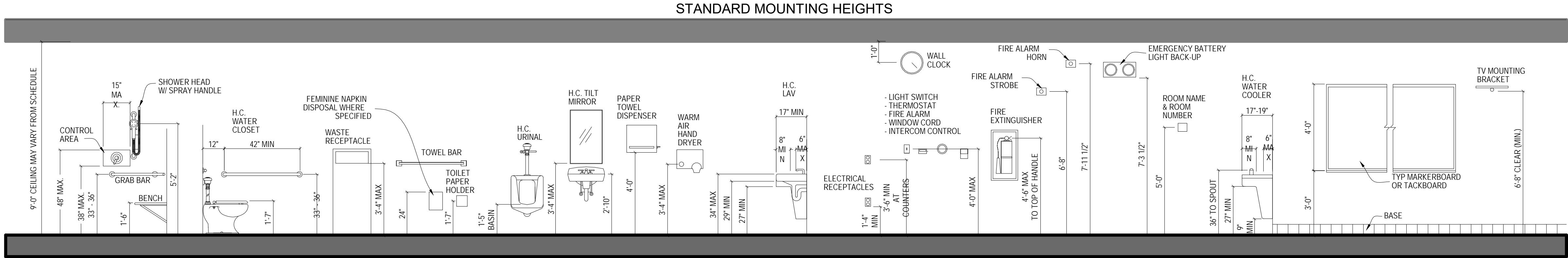
RENOVATIONS TO THE SECOND  
FLOOR OF THE EXISTING GYM  
ST. JOHNS RIVER STATE COLLEGE  
5001 ST JOHNS AVE. PALATKA, FL 32177

Seal / Signature

Project number	015ZA08
Date	11-19-25
Drawn by	TB
Checked by	JK
A001	
OF	SH EETS
Scale	As indicated



MATERIAL LEGEND		GENERAL NOTES		LIST OF ABBREVIATIONS (ALPHABETIZED)																													
	PARTITION	1. ALL WORK AND IMPROVEMENTS ARE CONFINED TO THE AREAS INDICATED IN THESE DRAWINGS. ALL WORK SHALL BE INSTALLED BY A LICENSED CONTRACTOR AND THE APPROPRIATE LICENSED SUBCONTRACTORS IN STRICT ACCORDANCE WITH ALL GOVERNING CODES.		A.B.	ANCHOR BOLT	C.T.	CERAMIC TILE	G.	GAS	MIR.	MIRROR	RVS.	REVERSE																				
	PARTITION WALL WITH SOUND BATTS	2. ALL WORK IS TO BE EXECUTED UNDER DIRECT SUPERVISION OF A CERTIFIED GENERAL CONTRACTOR. THE GENERAL CONTRACTOR SHALL VERIFY ALL SITE CONDITIONS, DIMENSIONS, AND COORDINATE ALL OPENINGS AND INSERTS WITH THE APPROPRIATE SUBCONTRACTORS. HANGING DEVICES SHALL BE INSTALLED SO AS NOT TO OVERLOAD THE ASSEMBLY OR ANY OTHER STRUCTURAL COMPONENTS. IT IS THE CONTRACTOR'S SOLE RESPONSIBILITY TO DETERMINE ERECTION PROCEDURE AND SEQUENCE TO ENSURE THE SAFETY OF THE BUILDING, ITS COMPONENTS, AND ALL PRESENT ON THE SITE.		ABV.	ABOVE	CTR.	COUNTER	GA.	GAUGE	MISC.	MISCELLANEOUS			S.	SOUTH, SWITCH																		
	BATT INSULATION			ACC.	ACCESS	C.W.	COLD WATER	GAL.	GALLON	N.D.	NOT DEDICATED			M.D.	MOLDING	SAN.	SANITARY																
	RIGID INSULATION	DIMENSIONS: ALL DIMENSIONS AND ELEVATIONS SHOWN ON THE DRAWINGS SHALL BE VERIFIED BY THE CONTRACTOR TO INSURE THE PROPER INTERFACING WITH EXISTING CONDITIONS. IF ANY CONFLICT OCCURS BETWEEN ANY PART OF THESE DOCUMENTS THE CONTRACTOR IS TO NOTIFY THE ARCHITECT IMMEDIATELY. IF THE ARCHITECT IS NOT AFFORDED THE OPPORTUNITY TO CLARIFY OR MODIFY ANY CONFLICTS, THE CONTRACTOR ASSUMES RESPONSIBILITY FOR RESOLVING ANY PROBLEMS WHICH MAY HAVE DEVELOPED.		ACCU.S.	ACCUSTICAL	C.F.T.	CUBIC FEET	GALV.	GALVANIZED	N.O.	MASONRY OPENING			MLO.	MODULAR	S.B.C.	SOUTHERN BUILDING CODE																
	FINISHED WOOD	RESPONSIBILITY: IT IS THE CONTRACTOR'S SOLE RESPONSIBILITY TO DETERMINE ERECTION PROCEDURE AND SEQUENCE TO INSURE THE SAFETY OF THE BUILDING AND ITS COMPONENT PARTS DURING ERECTION. THIS INCLUDES BUT IS NOT LIMITED TO THE ADDITION OF WHATEVER TEMPORARY BRACING, GUYS, OR TIE DOWNS THAT MAY BE NECESSARY. SUCH MATERIAL SHALL BE REMOVED AND SHALL REMAIN THE PROPERTY OF THE CONTRACTOR AFTER COMPLETION OF THE PROJECT. IT IS THE CONTRACTOR'S RESPONSIBILITY TO DETERMINE THE MEANS AND METHODS REQUIRED TO ACHIEVE THE INTENT OF THESE DRAWINGS.		A/C	AIR CONDITIONING	C.F.Y.	CUBIC YARD	G.B.	GRAB BAR	MOD.	MODULAR			G.C.	GENERAL CONTRACTOR(OR)	MOV.	MOVABLE	S.C.	SOLID CORE														
	DIMENSIONAL LUMBER			ADD.	ADDENDUM			GRD.	GRADE	MR.	MOISTER RESISTANT			G.I.T.	GLAZED INTERIOR TILE	MT.	MOUNTED	SCH.	SCREENED														
	WOOD BLOCKING	CONFLICTS: WHERE CONFLICTS OCCUR BETWEEN THE SPECIFICATIONS, REFERENCED CODES, NOTES, AND WORKING DRAWINGS, THE MOST STRINGENT REQUIREMENTS SHALL APPLY. IT IS THE CONTRACTOR'S SOLE RESPONSIBILITY TO NOTIFY THE ARCHITECT IMMEDIATELY OF ANY CONFLICTS FOR DIRECTION.		ADJ.	ADJUSTABLE	D.	DRAIN	G.KT.	GASKET	MTL.	MATERIAL			GL.	GLASS, GLAZING	MULL.	MULLION	SOH.	SOLID CORE														
	EARTH	COORDINATION: GENERAL CONTRACTOR SHALL COORDINATE ALL OPENINGS AND INSERTS WITH THE APPROPRIATE SUBCONTRACTORS ACCORDING TO THE PLANS. SEE SHOP DRAWINGS FOR ALL SUPPORTING STRUCTURES AND INSERTS REQUIRED BY THE VARIOUS BUILDING SYSTEMS. ALL SUPPORT STRUCTURES AND HANGING DEVICES SHALL BE INSTALLED SO AS NOT TO OVERLOAD THE STRUCTURE OR ANY STRUCTURAL COMPONENT. THE CONTRACTOR SHALL BE RESPONSIBLE FOR THE SAFETY OF THE STRUCTURE AND ITS OCCUPANTS.		AGG.	AGGREGATE	DEMO.	DEMOLISH, DEMOLITION	GOVT.	GOVERNMENT	MICRO.	MICROWAVE			CONV.	CONCRETE	SCH.	SCHEDULED	SCN.	SCREEN														
	C.M.U. WALL			A.H.U.	AIR HANDLING UNIT	DEP.	DEPRESSED	GRN.	GRANITE	G.R.V.	GRAVITY ROOF VENTILATOR	N.	NORTH	S.D.	SEALED CONCRETE	SCH.	SCHEDULED	SOH.	SOLID CORE														
	CAST-IN-PLACE CONCRETE	SUBMITTALS: THE REVIEW OF VARIOUS SUBMITTALS BY THE VARIOUS SUBCONTRACTORS AND PRE-ENGINEERED SYSTEMS ENGINEER OF RECORD WILL BE TO VERIFY THAT THE SUBMITTALS HAVE BEEN FURNISHED AND PREPARED BY A QUALIFIED PERSON, THAT THE PREPARER HAS UNDERSTOOD THE INTENT OF THE DESIGN AND THE CONSTRUCTION DOCUMENTS. NO DETAILED REVIEW WILL BE MADE BY THE ARCHITECT AND ENGINEER. THE GENERAL CONTRACTOR SHALL CHECK AND STAMP THE SHOP DRAWINGS INDICATING THAT A THOROUGH REVIEW WAS CONDUCTED AND STAMPED FOR CONFORMANCE PRIOR TO FORWARDING THEM TO THE ARCHITECT. THE ARCHITECT / ENGINEER WILL REVIEW THE SHOP DRAWING SUBMITTAL ONCE AND IF FOUND NOT TO BE IN CONFORMANCE, THE SUBMITTAL WILL BE REJECTED. ADDITIONAL REVIEWS CAN BE PERFORMED FOR THE COST BURDEN DIRECTLY RELATED TO THE ADDITIONAL REVIEW. FOR COLOR SELECTION, THE CONTRACTOR IS TO SUBMIT ALL COLOR RELATED PRODUCTS AT ONE TIME TO INSURE CONTINUITY IN THE OVERALL COLOR SCHEME USED.		ALUM.	ALUMINUM	DEPT.	DEPARTMENT	GRV.	GRAVITY ROOF VENTILATOR	N.	NORTH	SGL.	SINGLE	SEC.	SECTION	SERV.	SERVICE	SHTH.	SHEDTING	SHT.	SHEET												
	REINFORCED VERTICAL CMU CELL			ALT.	ALTERNATE	D.F.	DRINKING FOUNTAIN	GRS.	GRASS STOP	N/A	NOT APPLICABLE			GT.	GROUT	NAT.	NATURAL	SH.	SHelf														
				AMP.	AMPERE	D.H.	DOUBLE HUNG	G.T.	GRAVITY ROOF VENTILATOR	N.	NORTH	SGL.	SINGLE	SEC.	SECTION	SERV.	SERVICE	SHTH.	SHEDTING	SHT.	SHEET												
				ANC.	ANCHOR, ANCHORAGE	D.H.	DOUBLE HUNG	G.T.	GRAVITY ROOF VENTILATOR	N.	NORTH	SGL.	SINGLE	SEC.	SECTION	SERV.	SERVICE	SHTH.	SHEDTING	SHT.	SHEET												
				ANL.	ANGLE	DIA. or Ø	DIAMETER	H.	HIGH	N.C.	NOT INCLUDED IN THIS CONTRACT			GT.W.B./GYP.	BD -- GYPSUM WALLBOARD	NAT.	NATURAL	SH.	SHelf														
				ANGD.	ANGLED	DIAG.	DIAGONAL	H.B.	HOLLOW CORE or HANDICAPPED	N.T.S.	NOT TO SCALE																						
				A.P.	ACCESS PANEL	DISP.	DISPENSER	H.C.	HOLLOW CORE or HANDICAPPED																								
				APX.	APPROXIMATE	DIFF.	DIFFUSER	H.D.	HEAVY DUTY																								
				ARCH.	ARCHITECT/ARCHITECTURAL	DM.	DIMENSION	HOR.	HORIZONTAL																								
				ASB.	ASBESTOS	DIR.	DIRECTORY	H.F.E.	HALON FIRE EXTINGUISHER																								
				ASPH.	ASPHALT	DM.	DIMENSION	H.M.	HOLLOW METAL																								
				ATTN.	ATTENTION	DN.	DOWN	H.M.	HOLLOW METAL																								
				A.T.	ACUSTICAL TILE	DP.	DAMPING	H.M.	HOLLOW METAL																								
				AUTO.	AUTOMATIC	DP.	DAMPING	H.M.	HOLLOW METAL																								
				@	AT	DP.	DAMPING	H.M.	HOLLOW METAL																								
				BAL.	BALANCE	D.S.	DOWNSPOUT	H.M.	HOLLOW METAL																								
				BATT	BATTEN	DTL.	DETAIL	H.M.	HOLLOW METAL																								
				BRG	BEARING	DW.	DRYWALL	H.M.	HOLLOW METAL																								
				BD	BOARD	D.W.	DUMBWATER	H.M.	HOLLOW METAL																								
				BEL	BELOW	DW.	DISHWASHER	H.M.	HOLLOW METAL																								
				BETN.	BETWEEN	DWG.	DRAWING	H.M.	HOLLOW METAL																								
				BIT	BITUMINOUS	DWR.	DRAWER	H.M.	HOLLOW METAL																								
				B.J.	BAR JOIST			H.M.	HOLLOW METAL																								
				BLOG.	BLOCK	E.	EAST	H.M.	HOLLOW METAL																								
				BLK	BLOCK	E.A.	EACH	H.M.	HOLLOW METAL																								
				BLKG.	BLOCKING	E.B.	EXPANSION BOLT	H.M.	HOLLOW METAL																								
				BM	BEAM	E.F.	EACH FACE	H.M.	HOLLOW METAL																								
				B.M.	BENCH MARK	E.J.	EXPANSION JOINT	H.M.	HOLLOW METAL																								
				B.M.U.	BRICK MASONRY UNIT	EL.	ELEVATION	H.M.	HOLLOW METAL																								
				BOTT.	BOTTOM	ELV.	ELEVATOR	H.M.	HOLLOW METAL																								
				B.PL.	BEARING PLATE	ELEC.	ELECTRIC	H.M.	HOLLOW METAL																								
				BR	BEDROOM	EMER.	EMERGENCY	H.M.	HOLLOW METAL																								
				BRG.	BEARING	ENC.	ENCLOSE (URE)	H.M.	HOLLOW METAL																								
				BRK.	BRICK	ENGR.	ENGINEER	H.M.	HOLLOW METAL																								
				B.S.	BOTH SIDES	ENT.	ENTRANCE	H.M.	HOLLOW METAL																								
				B.W.	BOTH WAYS	E.P.	ELECTRIC PANELBOARD	H.M.	HOLLOW METAL																								
				BSMT.	BASEMENT	EQ.	EQUAL	H.M.	HOLLOW METAL																								
				B.T.U.	BRITISH THERMAL UNIT	EQUIP.	EQUIPMENT	H.M.	HOLLOW METAL																								
				B.U.R.	BUILT-UP ROOF	EST.	ESTIMATE	H.M.	HOLLOW METAL																								
				CAB.	CABINET	E.W.	ELECTRIC WATER COOLER	H.M.	HOLLOW METAL																								
				CAP.	CAPACITY	E.W.H.	ELECTRIC WATER HEATER	H.M.	HOLLOW METAL																								
				C.B.	CATCH BASIN	EX.	EXCAVATE	L.	LENGTH																								
				CER.	CERAMIC	EXH.	EXHAUST	LAB.	LABORATORY																								
				CEM.	CEMENT	EXIST.	EXISTING	LAM.	LAMINATED																								
				C.F.L.	COUNTERFLASHING	EXT.	EXTERIOR	LAM. PLAS.	LAMINATED PLASTIC																								
				C.F.	CUBIC FEET	EXT.	EXTERIOR	LAV.	LAVATORY																								
				C.G.	CORNER GUARD	L.G.	LONG	L.V.	LONG VERTICAL																								
				CHAM.	CHAMFER	L.H.	LEFT HAND	L.W.	LONG WEIGHT																								
				CHG.	CHANGE	L.L.	LIVE LOAD	L.W.C.	LIGHTWEIGHT CONCRETE																								
				CJ.	CAST IRON	L.N.	LINEUM	L.W.C.	LIGHTWEIGHT CONCRETE																								
				CR.	CIRCLE	L.N. FT.	LINEAL FEET																										
				C.J.	CONSTRUCTION JOINT	LKR.	LOCKER																										
				C.J.	CONSTRUCTION JOINT	L.L.	LIVE LOAD																										
				CK.	CAULKING	L.L.V.	LONG LEG VERTICAL																										
				CL.	CENTER LINE	LMS.	LIMESTONE																										
				CLG.	CEILING	LMT.	LIMESTONE																										
				CLOS.	CLOSET	L.T.	LIQUID TILE																										
				CLR.	CLEAR	L.TL.	LINTEL																										
				C.M.T.	CERAMIC MOSAIC TILE	LTV.	LOUVER																										
				C.M.U.	CONCRETE MASONRY UNIT	LW.	LIGHTWEIGHT																										
				COL.	COLUMN	LW.C.	LIGHTWEIGHT CONCRETE																										
				CONC.	CONCRETE	FIG.	FIGURE																										
				CONC. BLK.	CONCRETE BLOCK	FIN.	FINISHED																										
				CONC. FL.	CONCRETE FLOOR	FIXT.	FIXTURE																										
				COND.	CONDUIT	F.JT.	FLUSH JOINT																										
				CONN.	CONNECTION	FLSHG.	FLASHING																										
				CONST.	CONSTRUCTION	FLR.	FLOOR																										
				CONT.	CONTINUOUS	FLUR.	FLUORESCENT																										
				CONTR.	CONTRACT (CONTRACTOR)	FR.	FOUNDATION																										
				CORR.	CORRIDOR	FP.	FIREPROOF																										
				CPT.	CARPET	PPL.	PREPARED																										
				CSK.	COUNTERSINK	PPL.	PREPARED																										
				CSMT.	CASEMENT	PR.	FRAME (D) (ING)																										
				C.ST.	CAST STONE	FT.	FOOT																										
				C.T.	CERAMIC TILE	FTG.	FOOTING																										
						FUR.	FURRED																										
						FUT.	FUTURE																										
						F.V.	FIELD VERIFY																										



NOTE: WALL HEIGHTS SHALL BE 12" ABOVE HIGHEST ADJACENT CEILING HEIGHT U.O.N.

Revisions		
No.	Desc.	Date

CRG

CRG ARCHITECTS  
/ PALATKA, INC.  
216A ST. JOHN'S AVE.  
PALATKA, FL 32177  
A 0 0 0 2 6 0 4  
p. 386 - 325 - 0213  
f. 386 - 328 - 1401

BID SET
---------

ABBREVIATIONS & LEGENDS	
<div><div></div><div>1</div><div>DOOR MARK</div></div> <div><div></div><div>WALL MARK</div></div> <div><div></div><div>WINDOW MARK</div></div> <div><div>H 101</div><div>ROOM SPACE NUMBER</div></div> <div><div></div><div>EXIT LIGHT (ILLUMINATED)</div></div> <div><div></div><div>NORTH ARROW (TRUE)</div></div>	<div><div></div><div>DETAIL NO. SHEET NO.</div><div>SECTION/DETAIL TARGET</div></div> <div><div></div><div>ELEVATION NO. SHEET NO.</div><div>ELEVATION REFERENCE</div></div> <div><div></div><div>SECTION NO. SHEET NO.</div><div>WALL OR PARTIAL BUILDING SECTION</div></div> <div><div></div><div>SECTION NO. SHEET NO.</div><div>CROSS OR BUILDING SECTION</div></div>

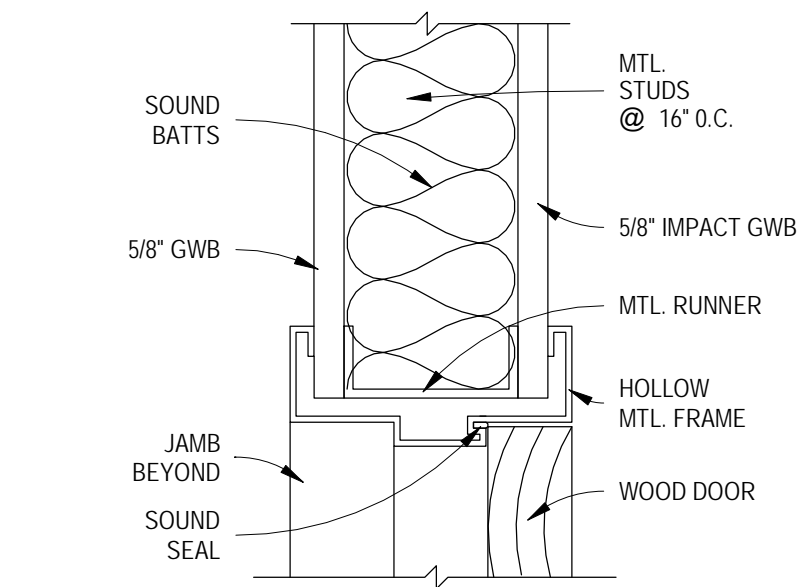
RENOVATIONS TO THE SECOND FLOOR OF THE EXISTING GYM  
ST. JOHNS RIVER STATE COLLEGE  
5001 ST JOHNS AVE. PALATKA, FL 32177

Seal / Signature

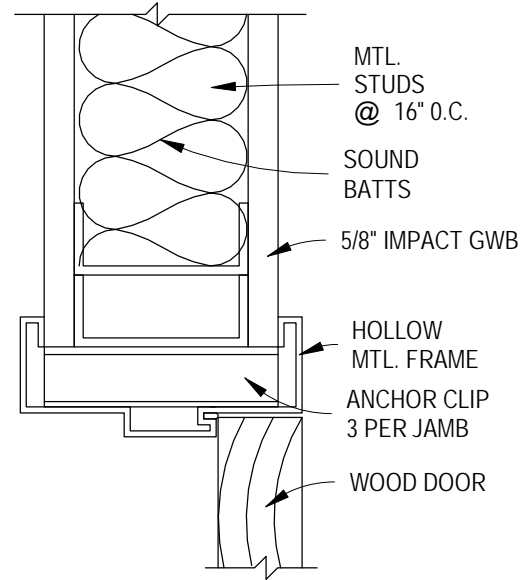
Project number 015ZA08  
Date 11-19-25  
Drawn by TB  
Checked by JK

A002  
OF SHEETS  
Scale 1 : 35

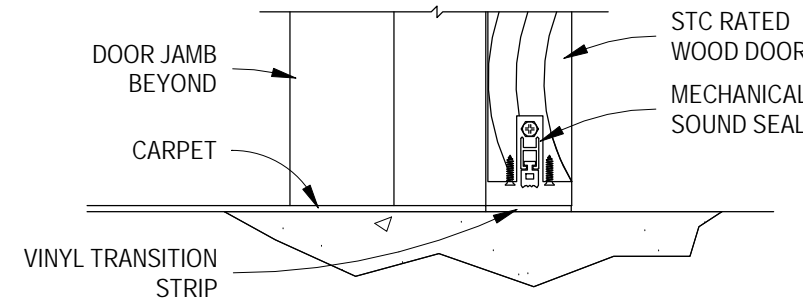




HEAD



JAMB

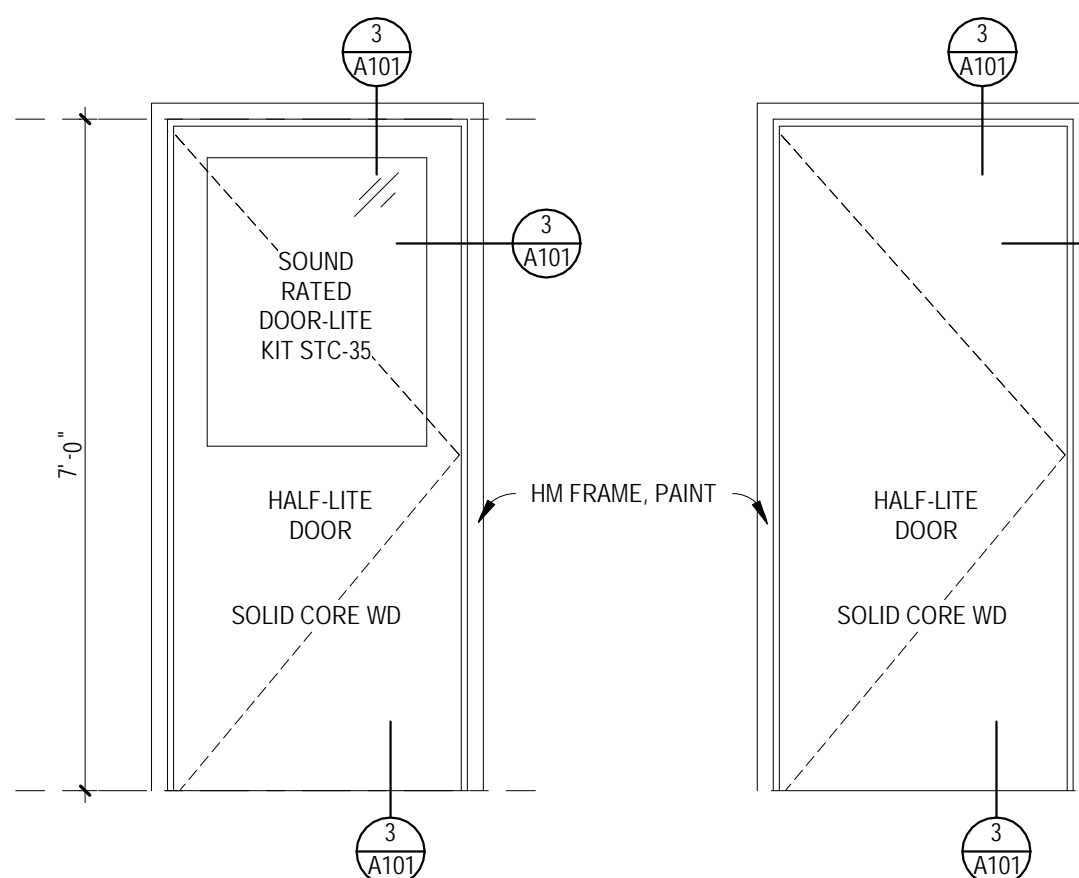


SILL

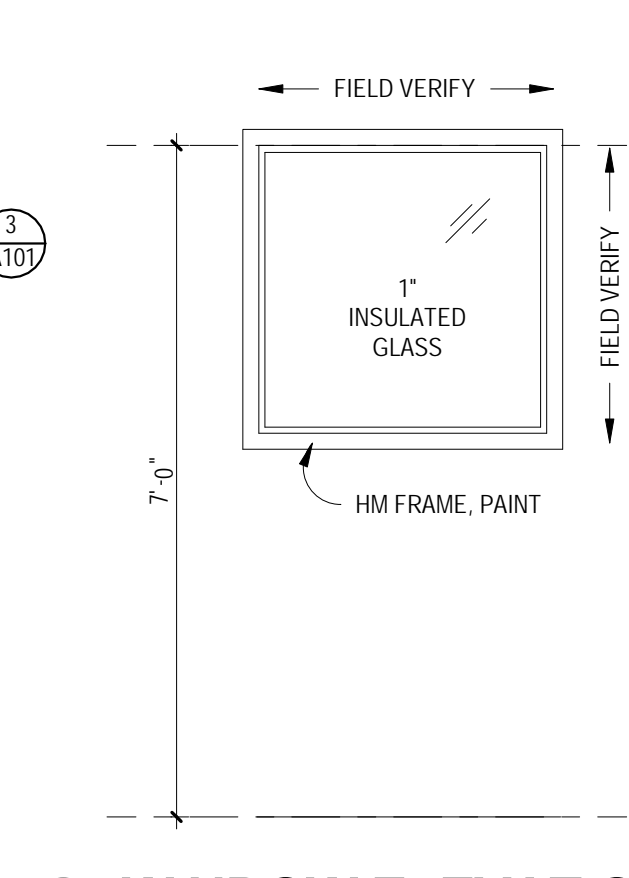
3 HEAD JAMB SILL  
SCALE: 3" = 1'-0"

Room Schedule					
Number	Name	Floor Finish	Base Finish	Wall Finish	Ceiling Finish
G0043	MECH	-	VINYL	GWB, IMPACT GWB	-
G0047	OFFICE	CPT	VINYL	GWB, IMPACT GWB	2' x 2' ACT (AT-1)
G0048	OFFICE	CPT	VINYL	GWB, IMPACT GWB	2' x 2' ACT (AT-1)
G0049	OFFICE	CPT	VINYL	GWB, IMPACT GWB	2' x 2' ACT (AT-1)
G0050	OFFICE	CPT	VINYL	GWB, IMPACT GWB	2' x 2' ACT (AT-1)
G0051	EQUIPMENT	-	VINYL	GWB, IMPACT GWB	2' x 2' ACT (AT-1)
G0051A	CLOSET	-	VINYL	GWB, IMPACT GWB	2' x 2' ACT (AT-1)
G0052	SUPPLIES	LVTP	VINYL	GWB, IMPACT GWB	2' x 2' ACT (AT-1)
G0055	OFFICE	CPT	VINYL	GWB, IMPACT GWB	2' x 2' ACT (AT-1)
G0056	SUPPLIES	LVTP	VINYL	GWB, IMPACT GWB	2' x 2' ACT (AT-1)
G0057	CONFERENCE ROOM	CPT	VINYL	GWB, IMPACT GWB	2' x 2' ACT (AT-1)

DOOR SCHEDULE								
Mark	W	H	T	Frame Material	Door Type	Door Material	Hardware	Fire Rating
01	3'-0"	7'-0"	1 3/4"	HM	HALF-LITE	WD	OFFICE	0
02	3'-0"	7'-0"	1 3/4"	HM	SOLID	WD	SUPPLIES	0
03	3'-0"	7'-0"	1 3/4"	HM	HALF-LITE	WD	OFFICE	0
04	3'-0"	7'-0"	1 3/4"	HM	HALF-LITE	WD	OFFICE	0
05	3'-0"	7'-0"	1 3/4"	HM	HALF-LITE	WD	OFFICE	0
06	3'-0"	7'-0"	1 3/4"	HM	HALF-LITE	WD	OFFICE	0
07	3'-0"	7'-0"	1 3/4"	HM	HALF-LITE	WD	OFFICE	0
08	3'-0"	7'-0"	1 3/4"	HM	HALF-LITE	WD	OFFICE	0
09	3'-0"	7'-0"	1 3/4"	HM	SOLID	WD	SUPPLIES	0
10	3'-0"	7'-0"	1 3/4"	HM	SOLID	WD	SUPPLIES	0



4 DOOR ELEVATIONS  
SCALE: 1/2" = 1'-0"



5 WINDOW ELEVATION  
SCALE: 1/2" = 1'-0"

**DOOR SCHEDULE LEGEND**

2 PANEL  
SF  
M  
GL  
SC/WD  
HM  
ALUM  
E  
E REL  
THRESH  
MET  
WD  
HL  
F  
NL

**DOOR SCHEDULE NOTES**

1. PROVIDE NEW HOLLOW CORE PRE-FINISHED 2 PANEL WOOD DOORS AND FRAME.
2. PROVIDE NEW SOLID CORE PRE-FINISHED FLUSH WOOD DOORS AND HM FRAME.
3. PROVIDE NEW STOREFRONT DOORS AND/OR WINDOWS AND FRAME.
4. PROVIDE NEW ALUM. THRESH (1/2" MAX HEIGHT)
5. 1 HOUR FIRE RATED
6. PROVIDE NEW MARBLE THRESH
7. PROVIDE LVT TRANSITION STRIP
8. SOUND RATED DOOR-LITE KIT STC-35
9. PROVIDE ADA COMPLIANT DOOR OPENING DEVICE

GENERAL NOTE: CONTRACTOR SHALL KEY NEW DOORS ALL ON THE SAME KEYING SYSTEM. CO ORDINATE REQUIRED KEYING WITH OWNER.

**FINISH SCHEDULE LEGEND**

CONC  
CT  
VCT  
WD  
E  
LP  
CPT

CONCRETE (TROWEL FINISH, SEAL)  
CERAMIC FLOOR TILE  
VINYL COMPOSITION TILE  
6" WOOD BASE  
EXISTING  
LAMINATE PLASTIC  
CARPET TILE

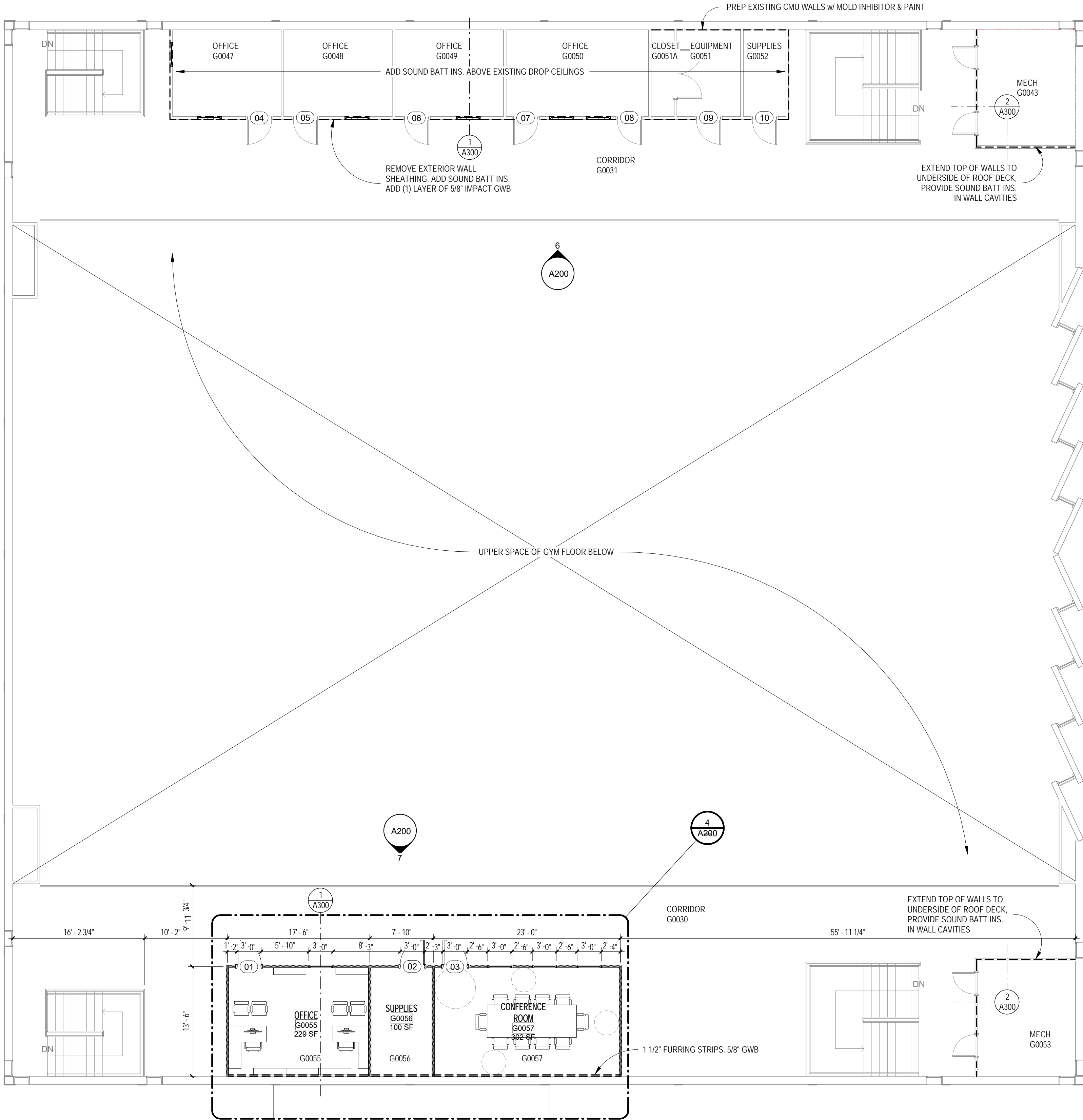
WD  
GL  
GWB  
CMU  
EXP  
MRGWB  
AT-1

WOOD  
GLAZING OR GLASS  
GYPSUM WALL BOARD (PAINTED)  
CONCRETE MASONRY UNITS (PAINTED)  
EXPOSED  
MOISTURE RESISTANT GYPSUM WALL BOARD  
CEILING TILE (24" x 24" TEGULAR TYPE)

**FINISH SCHEDULE NOTES**

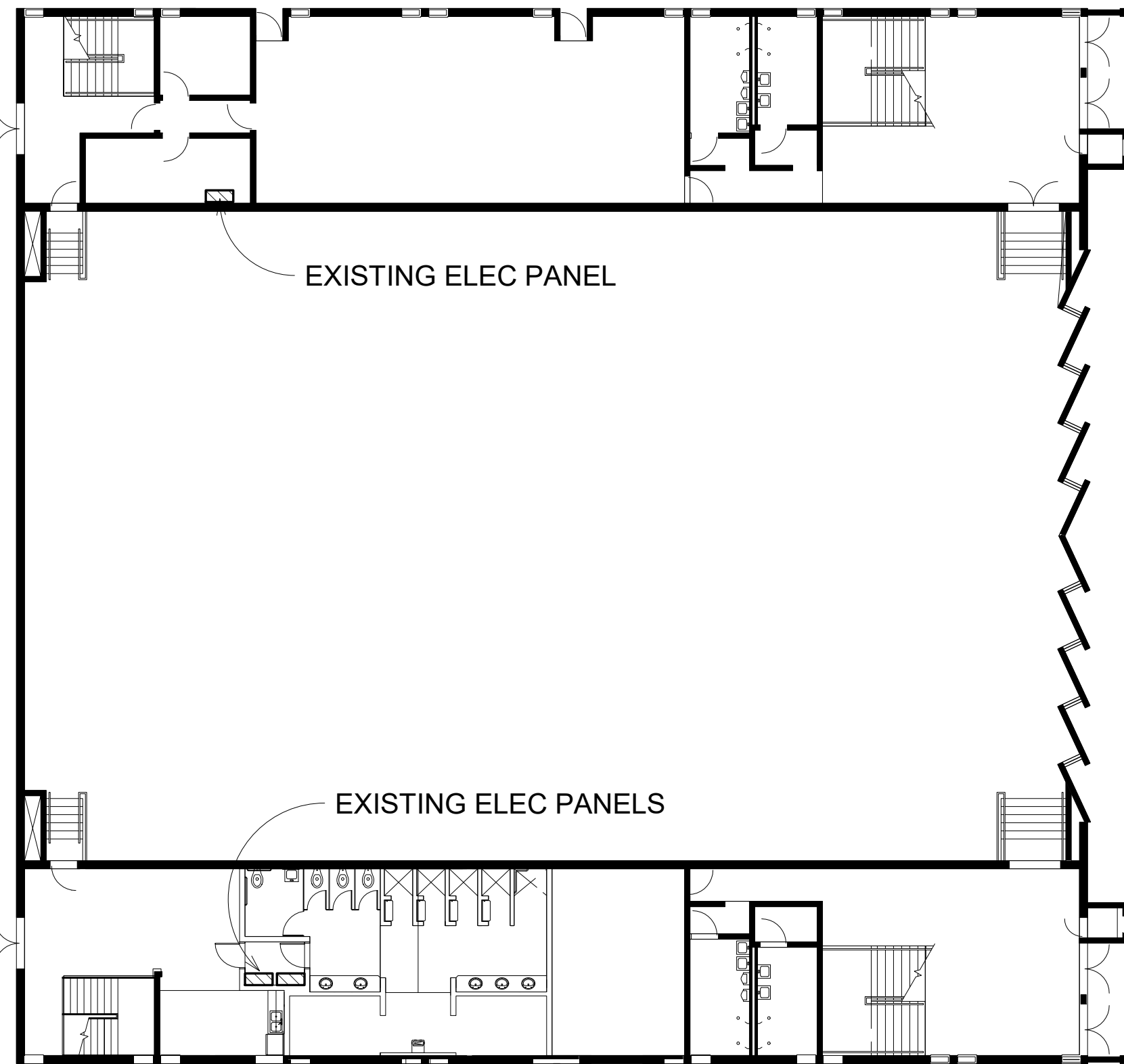
1. GWB AT WALLS SHALL HAVE A FINISH THAT MATCHES EXISTING ADJACENT WALL TEXTURE.
2. PAINT SHEEN AT WALLS SHALL BE EGGSHELL
3. GWB AT CEILINGS SHALL HAVE A SMOOTH LEVEL 4 FINISH
4. EXISTING WALLS TO BE PROTECTED, PATCH AND REPAIR EXISTING SURFACES AND SEAL
5. PROVIDE (2) COLORS OF PAINT AT WALLS, ARCHITECT SHALL PROVIDE DIRECTION

6. 1' X 2' CERAMIC FLOOR TILE (1 COLOR)
7. 1' X 2' CERAMIC WALL TILE (2 COLORS)
8. PROVIDE 4" ENCAPSULATED BATT INSULATION OVER ENTIRE CEILING
9. PROVIDE WOOD CHAIR RAIL AT ALL WALL SERVICES
10. PROVIDE LAP SIDING WAINSCOT AND CHAIR RAIL
11. PAINT SHEEN AT WALLS SHALL BE SEMI-GLOSS



1 OVERALL SECOND FLOOR PLAN  
SCALE: 1/8" = 1'-0"

GENERAL NOTE: OWNER SHALL REMOVE ALL FURNITURE PRIOR TO CONSTRUCTION ACTIVITIES



2 GYM 1ST  
SCALE: 1/16" = 1'-0"

Revisions		
No.	Desc.	Date

**CRG**

CRG ARCHITECTS / PALATKA, INC.  
216A ST. JOHN'S AVE.  
PALATKA, FL 32177  
A A 0 0 0 2 6 0 4  
p. 386 - 325 - 0213  
f. 386 - 328 - 1401

BID SET

FLOOR PLAN  
PROPOSED

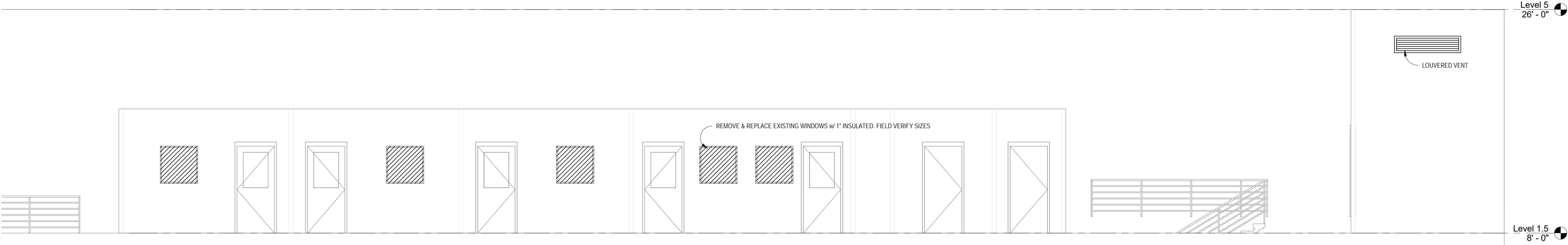
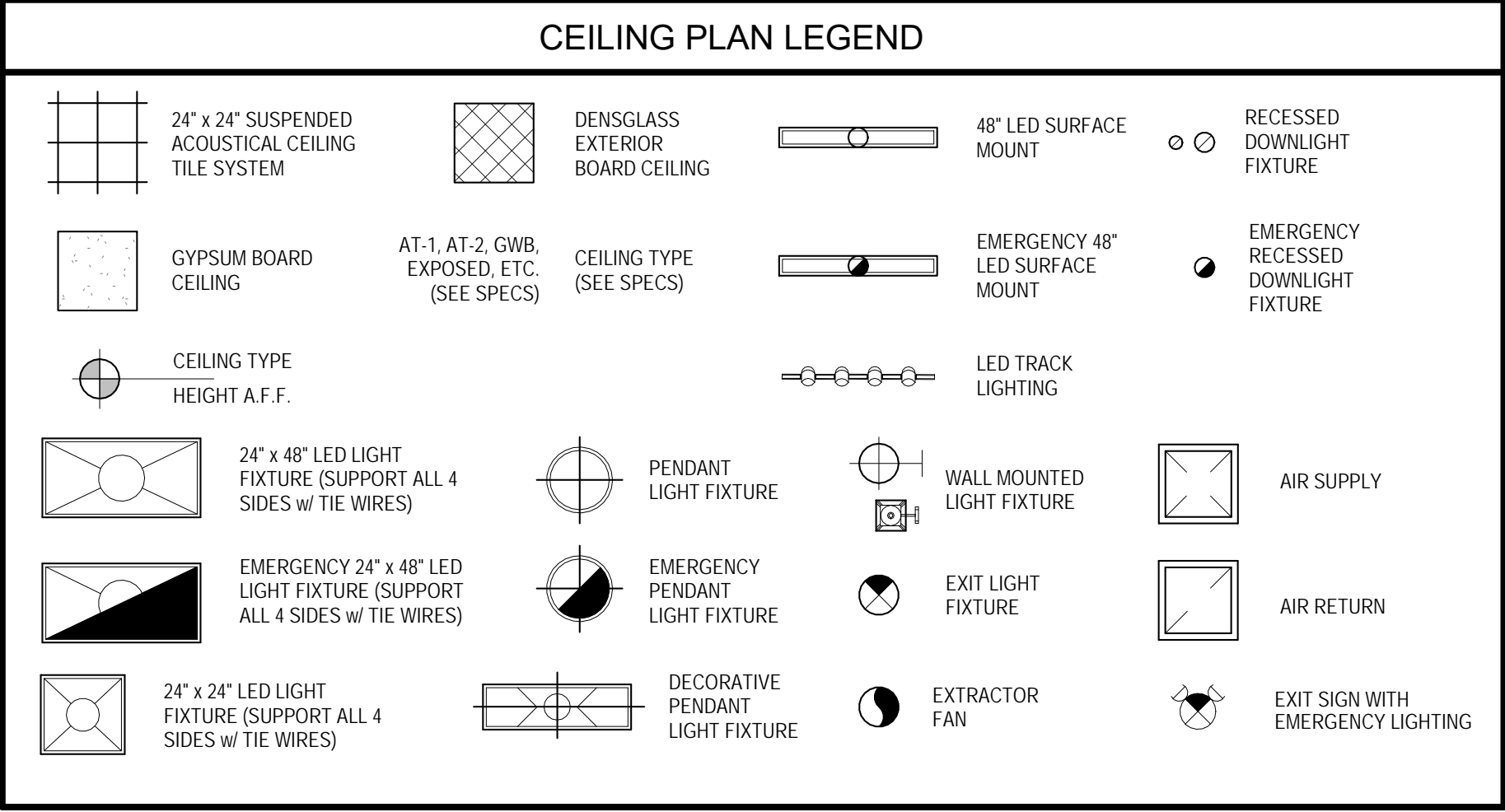
RENOVATIONS TO THE SECOND  
FLOOR OF THE EXISTING GYM  
ST. JOHNS RIVER STATE COLLEGE  
5001 ST JOHNS AVE. PALATKA, FL 32177

Seal / Signature

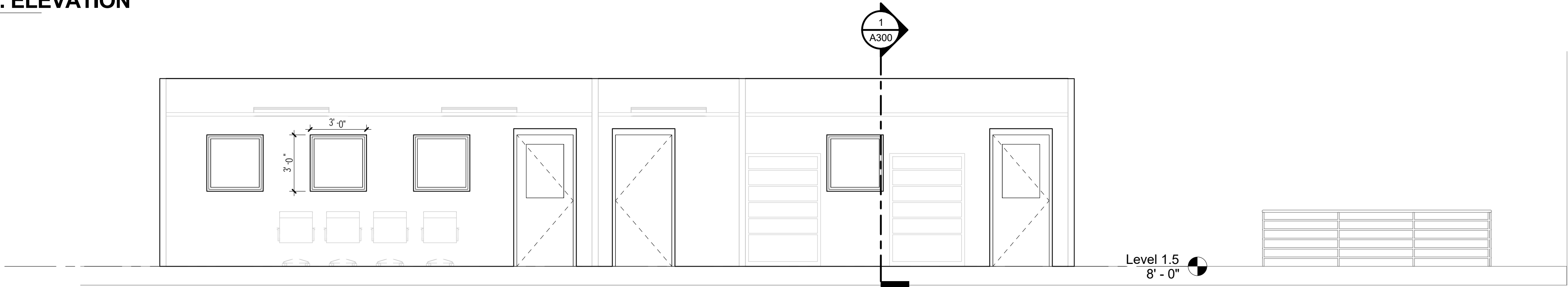
Project number 015ZA08  
Date 11-19-25  
Drawn by TB  
Checked by JK

**A101**  
OF SH EETS  
Scale As indicated

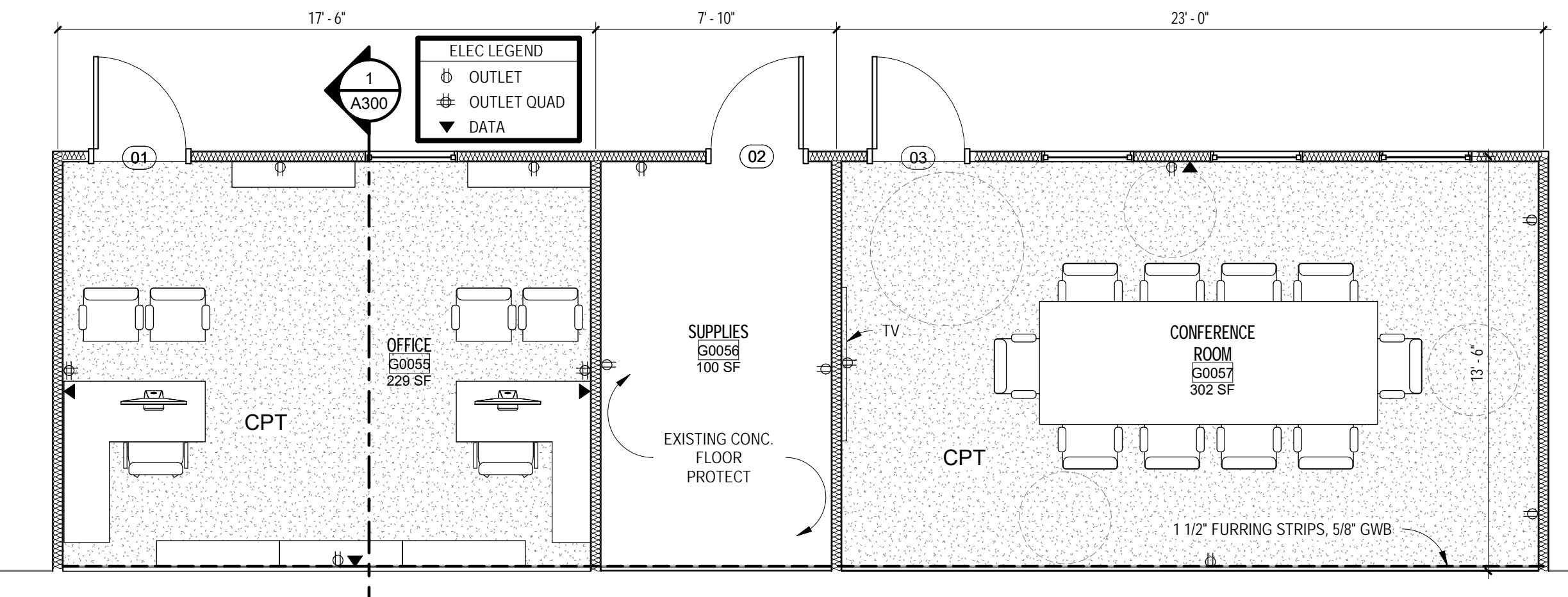
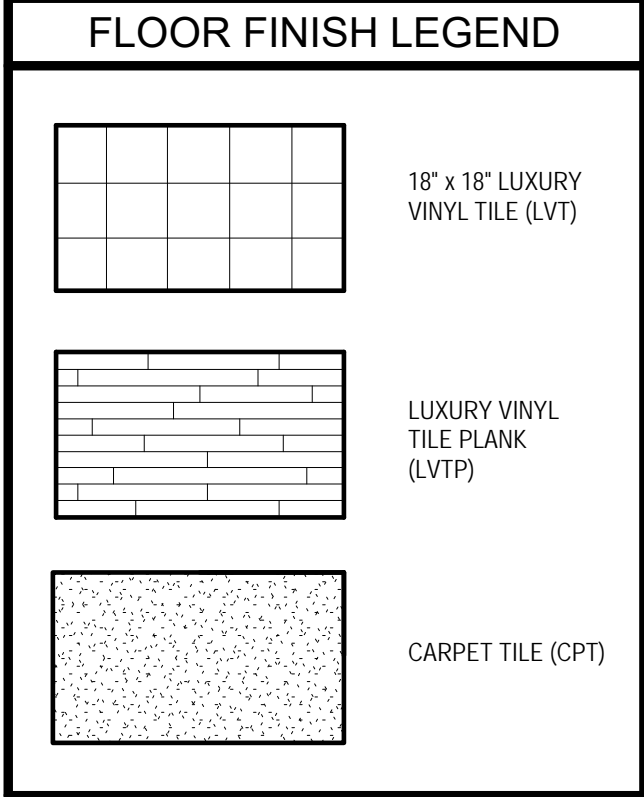




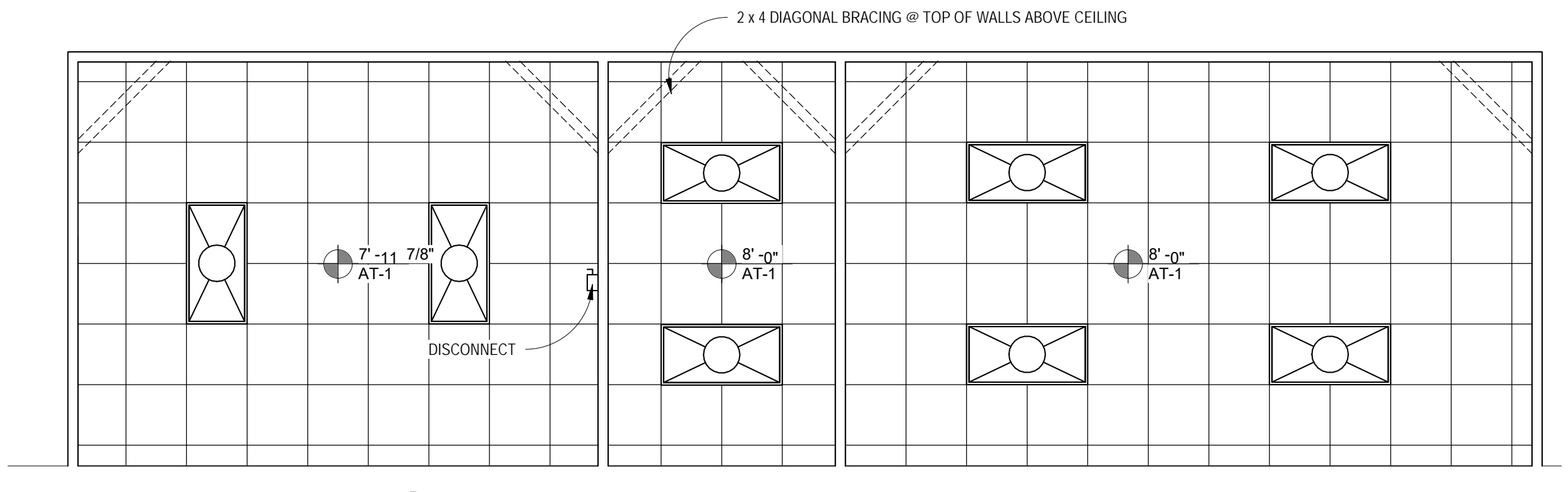
6 NORTH INT. ELEVATION  
SCALE: 1/4" = 1'-0"



7 SOUTH INTERIOR ELEVATION  
SCALE: 1/4" = 1'-0"



4 PARTIAL FLOOR PLAN SOUTH  
SCALE: 1/4" = 1'-0"



1 REFLECTED CEILING PLAN  
SCALE: 1/4" = 1'-0"

GENERAL NOTE: MECHANICAL EQUIPMENT CONTRACTOR SHALL SIZE DIFFUSERS APPROPRIATELY TO PROVIDE AIR AT THESE 3 SPACES

Revisions		
No.	Desc.	Date

**CRG**

CRG ARCHITECTS / PALATKA, INC.  
216A ST. JOHN'S AVE.  
PALATKA, FL 32177  
A A 0 0 0 2 6 0 4  
p. 386 - 325 - 0213  
f. 386 - 328 - 1401

BID SET

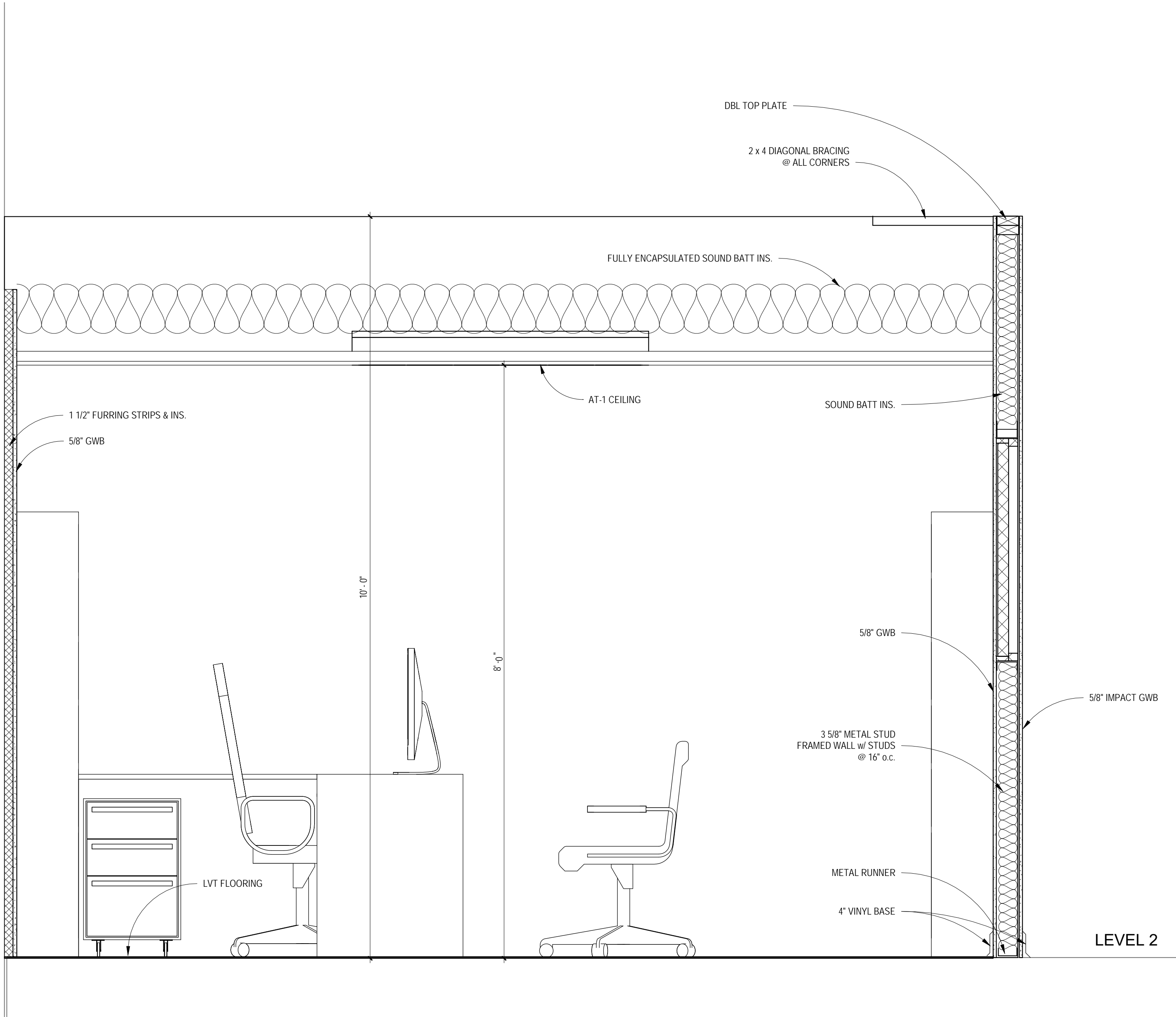
REFLECTED  
CEILING PLAN,  
INT ELEVATIONS

RENOVATIONS TO THE SECOND  
FLOOR OF THE EXISTING GYM  
ST. JOHNS RIVER STATE COLLEGE  
5001 ST JOHNS AVE. PALATKA, FL 32177

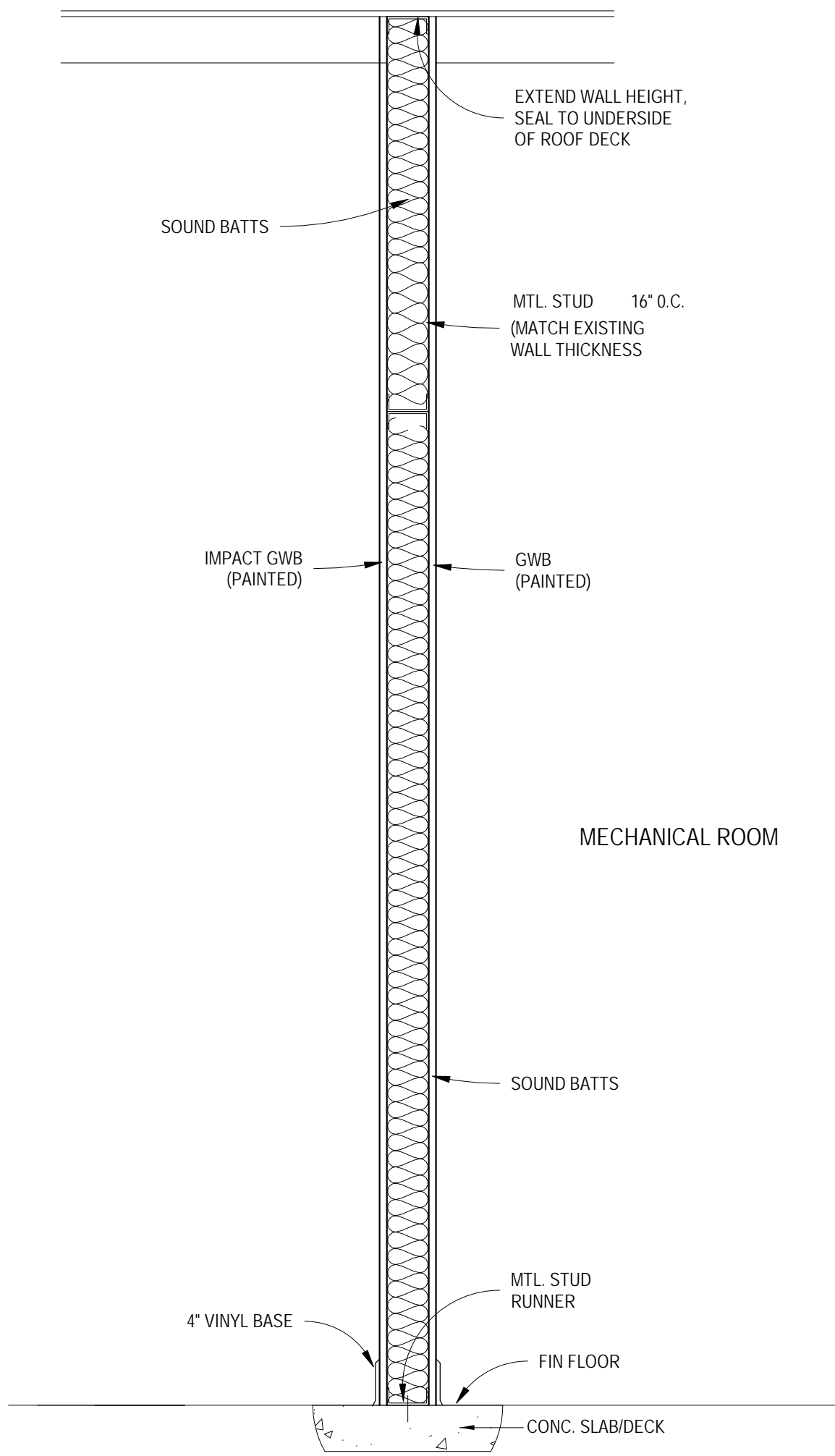
Seal / Signature

Project number 015ZA08  
Date 11-19-25  
Drawn by TB  
Checked by JK

**A200**  
OF SH EETS  
Scale As indicated



1 OFFICE SECTION  
SCALE: 1" = 1'-0"



2 MECH ROOM WALL SECTION  
SCALE: 1" = 1'-0"

Revisions		
No.	Desc.	Date

CRG

CRG ARCHITECTS  
/ PALATKA, INC.  
216A ST. JOHN'S AVE.  
PALATKA, FL 32177  
A A 0 0 0 2 6 0 4  
p. 386 - 325 - 0213  
f. 386 - 328 - 1401

BID SET

SECTIONS &  
DETAILS

RENOVATIONS TO THE SECOND  
FLOOR OF THE EXISTING GYM  
ST. JOHNS RIVER STATE COLLEGE  
5001 ST JOHNS AVE. PALATKA, FL 32177

Seal / Signature

Project number 015ZA08  
Date 11-19-25  
Drawn by TB  
Checked by JK

A300  
OF SHEETS  
Scale 1" = 1'-0"